

HUNTER NUTRITION

The Program That Performs

**Manufacturer of High Performance Feeding Programs
for Livestock, Horses, and Show Animals**



**35 YEARS
1990-2025**



2025 Catalog

Phone 1-765-563-1003

Fax 1-765-563-1005

hunternutrition.com

sheepfeed.com

Texturized Feeds

Pelleted Feeds

Free Choice Minerals

Livestock Premixes

Bagged and Bulk Feeds

Innovative Sheep Feeds

Feed Additives

Animal Health & Vaccines

Supplies & Equipment

Beef Cattle Feeding Program

COMPANY INFORMATION

PHILOSOPHY AND GENERAL INFORMATION

HUNTER NUTRITION, INC. is a regional livestock feed manufacturing company owned by Jeff Hunter. **Our primary business is the formulation and manufacturing of highly fortified specialty livestock feeds.** We have been manufacturing feeds since 1990. I, Jeff Hunter, have been involved with ruminant livestock nearly all my life and have been formulating livestock feeds since 1981. Most companies 'just' make feed - Proper Nutrition has always been my top priority. I formulate feed that will allow an animal to reach its genetic potential. This means feeds that are fortified above NRC and traditional levels. Special emphasis has been given to levels and balance of important trace elements and vitamins. Feed digestibility is a major concern in our formulations - no cheap fillers are ever used. Typical feed companies are less concerned with volume selling and price per bag of feed. The true cost of feed is in the results (or cost per pound gained). HUNTER NUTRITION feeds use higher quality ingredients, are properly balanced and are highly digestible. Our clients often use 20% less feed than ordinary formulas.

Quality is number one with us. We have the best formulas made with the best ingredients in our modern and efficient manufacturing plant.

Quality in feed means clients use less feed to obtain optimum performance, saving them money. Our quality starts with using only ingredients with very high nutrient availability and digestibility. Very precise manufacturing procedures and quality control programs are part of our everyday work. Our horizontal mixing systems are far superior to the normal vertical mixers found at typical country elevators and small feedmills. Our mixing equipment is nearly 100% self-cleaning; this means better feed quality. Our mixers gently fold and mix as opposed to the hard flinging action of vertical mixers. Our feeds are uniform; they have less fines, separation, and break up of ingredients with our manufacturing equipment. Even our bulk ingredients are conveyed via their own individual auger - thus no contamination. Manufacturing of feeds is done in a species and medication sequence. This insures top quality, no contamination of feeds, and consistent feeds.

Hunter Nutrition manufacturers feed for all livestock. We make all forms of feed: Texturized, Pelleted, and Mineral/Premixes. We are unique in the fact that we make all three forms of feed. Most manufacturing plants make only one or two forms of feed.

We make all three forms of feed. While we are best known for our Sheep Feeding Program and our Show Feeds; we are actually a full-line feed manufacturer.

We also produce highly fortified product lines of feed for Goats, Horses, Llama, Poultry, Cattle, Show Pigs, plus - Liquid & Dry Show Feed Topdresses. We made over 183,000 bags of feed from all lines in 2022. Additionally we made 1825 tons of bulk feeds. Our CFE (Complete Feed Equivalent) Tonnage was 38,863.54 tons in 2019. A companies CFE tons is used to compare mills in respect to how many tons of complete feed are made from their production. Supplements and Premixes made by a mill are used to further manufacturer feeds elsewhere. Thus a mill making premix and supplements can compare itself to a mill making all complete feeds.

HUNTER NUTRITION manufactures a diverse line of products. We have toll milled rabbit, cavy, sheep, goat, horse, beef, pigeon, and deer feed for other regional and national feed companies. We make the most complete line of Sheep Feeds in the country, over 25 different products! Our Beef Feeding Program has an expanded line up of complete, supplement, and mineral products. We make several different custom beef feeds; premixes, texturized, feedlot, free choice mineral, calf pellets, commodity pellets, and pelleted feeds for the cow herd. Horse, Goat, Rabbit, and Poultry Feeds sales and product line up continue to grow. No matter what feed we are making, customers come to us when they 'want it done right'.

We also manufacture the internationally sold product 'SURVIVE!' This is our oral Vitamin and Energy supplement for newborns, weak and off-feed animals.



OUR FACILITIES

- 58,000 sq. ft. of manufacturing plant sitting on 5.06 acres
- 3 Horizontal Mixers
- 2 Pellet Mills
- 25 Ingredient Bins
- 3 Feed Bagging Lines
- Overhead Bulk Load Out Bins
- Hammer Mill
- Roller Mill
- 1600 sq. ft. Office Space
- 2 Sets of Truck Docks
- Scale for Semi-Trucks
- 830 Tons Bulk Ingredient Storage
- Tote Filling Capability
- 100's of Tons of Bagged Warehouse Storage for Finished product

OUR MANUFACTURING EQUIPMENT

In 2006, we moved our current Texturized Feed Manufacturing equipment to a new plant. Additionally we have two pellet mills with their associated equipment (legs, dies, coolers, and boiler).

We have three horizontal mixers; each dedicated to certain product lines. A main receiving leg about 130 foot tall initially moves ingredients into storage bins. Seven other legs (bucket elevators) move product around in the plant.

We have two square bin cluster structures. The tallest holds 400 tons of ingredients and sits over a weigh hopper which feeds either the horizontal drum mixer or horizontal premix mixer. The horizontal drum mixer feeds the two pellet mills. The other square structure holds six hopper bottom style bins which holds 280 tons of ingredients for making Texturized feeds. We have sixteen overhead bulk load out bins for finished product in bulk. There are three separate bagging/sewing lines for bagged products.

COMPANY INFORMATION

NEW FACILITY IN 2006

As many of you know we out grew our original facility many years before we relocated. We had been getting by for years with our crowded feedmill and rented warehouse space. We would frequently manufacture and ship the same day due to a lack of space. I had been looking for a new location for over 2 1/2 years. Initially we were unable to find another feedmill to purchase. We looked at building or buying a warehouse style building with office space for our feed manufacturing. We knew we needed a larger office, much more warehouse space, additional ingredient storage and extra manufacturing capabilities such as pelleting.

In late June 2005, I became aware of a possible opportunity. United Feeds had decided to close its manufacturing plant in Brookston, Indiana. They were consolidating production into their other plants and no longer needed to make feed at Brookston. The Brookston plant was 17 miles from home and fully operational. It had the things we needed. A large office, bagged feed warehouse space, bulk load-out capabilities, more ingredient storage, and two pellet mills. Our feed business has always been much larger than most folks think; as they were basing their perception on our facility size. We moved on January 9, 2006.

The Brookston plant is a huge facility with 58,000 square feet: no this is not a typo— it's a 58,000 sq. ft. facility sitting on over 5 acres. The plant at Brookston is not a grain elevator; it is strictly a feed manufacturing plant. I purchased the entire plant and we leased the plant's truck repair shop and 7,700 sq. ft. of extra warehouse space.



OUR HOURS

Monday thru Friday 9am – 5pm
Closed Saturday & Sunday
Closed Holidays

hunternutrition.com

SHEEP FEEDING PROGRAM PHILOSOPHY

Proper Sheep Nutrition is my top priority. HUNTER SHEEP NUTRITION (HSN) products are formulated at levels above NRC requirements in order for our clients flocks to attain top performance. Higher levels of digestible nutrients, energy, lysine, vitamins, minerals, selenium, and bovatec not only increase performance, but are also a factor in disease resistance, and the health of the sheep and lambs. Unlike the so called “Major” feed companies, I have created separate feeds and feeding programs for both ewes and lambs. Different feeding programs are a must; A “one feed or supplement does all” approach is just not correct! The adult ewe consumes a diet higher in forages than grain, which is high in calcium and low in phosphorus. Lambs, on the other hand, require a diet high in phosphorus and low in calcium, (just the opposite). Therefore, no supplement could possibly balance both diets. Adult sheep and lambs also have large differences in requirements for selenium, energy, protein, vitamins and minerals.

When I formulate a feed, the animals consumption level is first taken into account, and the feed is made based on that. Many other companies just put together a feed based on standard ‘ton’ basis levels, and disregard how much the animal will consume. The idea of formulating feeds based on consumption is not new - most companies just don’t bother because sheep are not their primary business. (*See example.)

*Situation = Bovatec feeding to ewes prior to lambing. FDA allows either a 30 gram/ton or 70 mg/ewe/day level. A typical ton of ewe supplement contains 120 gram/ton of bovatec. When 300 lbs. of this supplement is used per ton of grain mix, a 30 gram level is achieved. When the ewe consumes 2 lbs. feed per day, she receives 18 mg of Bovatec. Since the drug manufacturer recommends feeding 24 to 70 mg/ewe daily, this level is really useless in cleaning up the ewe of cocci.

Since I formulate on a consumption basis and state this on the tag, I meet FDA rules and get more Bovatec into the ewe. The use of 330 lbs. of my 45% Ewe supplement (408 g/ton Bovatec) in a ton of ewe grain mix results in 1/3 lb. of supplement fed daily. This 1/3 lb. of 45% contains 70 mg Bovatec. This level is high enough to clean up the ewe and reduce the amount of cocci present at lambing time to infect new lambs.

SEE PAGES 34-37

CONTENTS

Company Information	2-3
Sheep Mineral & Micro-Premixes	4
Ewe Feeding Program	5
Lamb Starter Feeds	6
Lamb Grower/Finisher Feeds	7
Show Sheep Feeds	8
Conceptio Breeding Feeds	9
2024 Show Lamb Winners and Hunter Rewards Program	10
Sample Club Lamb Feeding Program	10
Show Feed Additives	11
Beef Cattle & Show Feeds	12
Beef Premix & Minerals	13
Beef Cattle Feed & Supplies	14
Dairy & Dairy Beef Feeds	15
Beef Cattle Herd Program	16-18
Horse Feeds & Supplies	19
Dairy & Meat Goat Feeds	20-21
Goat Herd Health & Feeding Program	22
Show Pig Feeds	23
Rabbit & Cavy Feeds	24
Hay Saver	24
Feed Additives & Ingredients, Poultry Feed	25-26
SURVIVE! Vitamin E & Energy for Lambs	27
Milk Replacers	28
Injectables, Instruments & Supplies	29
Animal Health & Supplies	30-31
Dewormers & Supplies	32
Footrot Treatments	33
Show Lamb Fungus Treatments	27
Biologicals/ Pharmaceuticals	33
Informational Articles	34-36
Sample Flock Health & Feeding Program	37
Low Cost Feed Shipping Program	38
Ordering Instructions	39
New & Featured Products	Back Cover
Ordering Form	Insert

**PRICES SUBJECT TO
CHANGE WITHOUT NOTICE.**

SHEEP MINERAL & MICRO-PREMIXES

SHEEP MINERAL **IMPROVED!**

Our own High Selenium, Free Choice Mineral formulated just for sheep. It contains molybdenum to prevent copper toxicity and it is made without any added copper. Contains 27% Salt, 18% Calcium, 9% Phosphorus, Macro Minerals, Trace Minerals, Iodine, and Selenium. Each 3/4th's of an ounce of our sheep mineral contains the maximum selenium level allowed by the FDA, at 0.70 mg. (This is an increase as our previous level was 0.70 mg selenium per 1 ounce of mineral.) This level of Selenium is higher than other competitor's free choice mineral. Our higher levels of zinc and iron are important for maintaining high growth rates, preventing anemia, and increasing resistance to disease. To prevent goiter and to aid in improvement of reproductive efficiency, Iodine is included at the correct level. In 2013 we increased our Zinc and Manganese to 1200 ppm each in all versions of Sheep Mineral. Zinc plays a major role in animal health in general, and is important in maintaining hoof health, strength, and function. Manganese is important to reproductive performance. Inadequate Manganese causes delayed estrus and reduced conception rates. All versions of Sheep Mineral contain Magnesium, Potassium, Sulfur, and Cobalt. Many competing products, especially the high salt mixes lack magnesium and potassium. Ewes typically consume 1/2 to 1 ounce of mineral per day, or approximately 17# per year, equaling a cost/ewe/year of \$8.50. No additional salt is needed. Sheep Mineral contains no vitamins because during maintenance and early gestation, the ewe's vitamin needs are fulfilled by the forage in the diet. However in late gestation and lactation the diet will need to be supplemented with our 45% Ewe Supplement or Ewe 60 Premix, which will provide the extra vitamins required by the ewe at these stages of production.

#501500 50# (Ship wt. 52 lbs.) \$ 29.82

SHEEP MINERAL W/DECCOX®

Similar to our other free choice mineral, except that this contains Decoquinat for the prevention and control of coccidiosis. Should be fed for 40 days pre-lambing to ewes as a means of cleaning up the adults of cocci. This will greatly reduce the level of cocci in the lambing environment, enabling the young lambs to avoid performance-reducing infections at a young age. A feeding level of one ounce/day of mineral provides 22.7 mg/100 lb of body weight of deccox.

#501500D 50# (Ship wt. 52 lbs.) \$ 36.10

Deccox® is a registered trademark of Alpharma Animal Health Inc.

SHEEP MINERAL W/VITAMINS

The same formulation as our regular free choice sheep mineral, but with added vitamins. Feeding 1 ounce of mineral per day provides 30 IU of Vitamin E and additional levels of Vitamin A and Vitamin D not offered by other companies mineral formulations.

#501499 50# (Ship wt. 52 lbs.) \$ 31.28

NO PHOSPHOROUS SHEEP MINERAL

A free choice mineral product designed for breeding rams and lambs on feed who should not get any dical (phosphorous). Excessive phosphorous can cause urinary calculi (kidney stones) in male animals. No Phosphorous Sheep Mineral contains the selenium and trace mineral levels of our standard Sheep Mineral products, but with zero phosphorous. It's okay for breeding rams to be exposed to Sheep Mineral (standard) while with the ewe flock during breeding time. However after the ewes are bred, rams should be separated from the flock and fed No Phosphorous Sheep Mineral as their free choice mineral. This is also the product of choice for lambs on feed and in any situation where phosphorous is not desired.

Calcium 26.00% Salt 27.00% + Trace Minerals
Phosphorous 0.00% Selenium33 ppm

#501498 50# (Ship wt. 52 lbs.) \$ 16.72

Far Away ? – Yes, you can still get your flock on our feeding program.

Low Inclusion Micro-Premixes are the best way to get the advantages of the Hunter Nutrition Sheep Feeding Program to our distant clients. For flocks where shipping costs are prohibitive on standard products we have micro-premixes. These 10 lb premixes are easy to use and are tailored for a specific use. Ewe 10 B Premix and Lamb 10 B Premix are used at ten pounds per ton of feed. They provide essential vitamins, minerals, trace elements, selenium, and bovatoc. Use these with your locally available grains, protein source, limestone, and salt. The low shipping costs on a 10 # product which will make an entire ton of finished feed allows flocks across the country to benefit from our highly fortified sheep feeding program. We also have a premix for making your own free choice mineral - Sheep Premix 200. See pages 4-7.



SHEEP MINERAL W/RABON® (Fly Control)

Similar to Sheep Mineral, with added Rabon® an oral larvicide; which is fed 30 days prior to fly season. The oral larvicide goes thru the animal into its manure, when fly eggs hatch in this manure, the larvae are killed by the oral larvicide.

Special Order/Seasonal Item.

#501500 R 50# (Ship wt. 52 lbs.) \$ 35.59

Rabon® is a registered trademark of KMG-Bernuth.

SHEEP PREMIX 200

Sheep Premix 200 is used at the rate of 200 lbs. per ton of Free Choice Sheep Mineral. For small batches use 10# of this premix to make 100 # of your own free choice sheep mineral. This premix was created after numerous customer requests for a way to make a good free choice sheep mineral, and avoid having to ship in #501500 Sheep Mineral. We do have excellent common carrier rates on shipping pallets of sheep mineral to distant locations. However if this just doesn't work and you are confident of your mixing abilities this premix could be your answer. Sheep Premix 200 is used with your local salt and minerals to make a sheep mineral for free choice feeding. Sheep Premix 200 provides magnesium, potassium, sulfur, selenium, iodine, iron, zinc, manganese, molybdenum, & cobalt, all at optimum levels, along with some calcium as carrier.

Formula for making Free Choice Sheep Mineral	100#	2000 #
Dicalcium Phosphate (18.5% Phosphorous)	50	1000
Limestone (granular-calcium carbonate 38% Ca)	15	300
Salt, white mixing	25	500
Sheep Premix 200	10	200
	100 lbs.	2000 lbs.

Analysis of above:	Calcium	19.40%
	Phosphorous	9.25%
	Salt	25.00%
	Selenium	0.70 mg per 3/4ths of an ounce

#50006-10 10# (Ship wt. 11 lbs.) \$ 20.01

#50006-50 50# (Ship wt. 52 lbs.) \$ 66.04

EWE FEEDING PROGRAM

- **High Selenium and Vitamin E Levels** – Daily intake levels of 0.70 mg Selenium, and 50 IU Vitamin E, are achieved on HUNTER NUTRITION's Ewe Feeding Program. These high levels are unique to the industry. Our high Selenium and Vitamin E level prevents White Muscle Disease in lambs; weak & slow lambs; reduces retained placentas, improves disease resistance, and maximizes performance.
- **High Bovatec Levels** – Daily intake levels of 70 mg are very high and unique to HUNTER NUTRITION. The results are superior cocci control through "cleaning up" the ewe prior to lambing. Competitors levels are typically 1/4 of ours.
- **Proper Mineral Balance** – Calcium, Phosphorus, properly balanced to maximize performance.
- **High Trace Minerals** – High Iron, Iodine, and Zinc are just a few of the unique features of the HUNTER NUTRITION Ewe Feeding Program. Proper trace mineral levels prevent goiter, aid in disease control, and improved immunity.

45% EWE SUPPLEMENT

45% Ewe Supplement is a highly fortified protein, bovatec, vitamin, and mineral supplement for late gestation and lactation ewes. This pelleted protein supplement provides levels of nutrients that are as much as four times higher than competitors. When 45% Ewe is fed at 0.33 lbs./ewe/day, it provides: **70 mg Bovatec, 0.70 mg selenium, and 50 IU Vitamin E**, as well as all other minerals, Vitamins A & D, Iodine, and trace elements needed by the ewe. High Vitamin E and Selenium in late gestation helps to prevent white muscle disease in newborn lambs, reduces weak and stillborn lambs, and lowers the incidences of retained placentas. High Phosphorus levels and bypass protein increase milk production. 45% Ewe is much higher in protein & Bovatec (408 grams/ton), so a much lower feeding level is required. The high level (70mg daily) of Bovatec provided by 45% Ewe will clean the ewe up of cocci and thus the environment in which the lambs are born. This gives the lambs a chance to get old enough to consume enough creep to medicate themselves. Feeding levels of 45% Ewe range from 0.25 to 0.33 lbs/ewe/day; a cost of \$0.13/day/ewe.

Sample Rations:

Feeding Rate (lbs./hd./day)	Gestation		Lactation	
	1.25	1.50	2.00	2.50
Corn	1550	1600	1700	1750
45% Supplement	450	400	300	250
	2000#	2000#	2000#	2000#

Feed Gestation Rations with 4 lbs of first cutting hay. Feed Lactation rations with 4 - 5 lbs. of good quality hay legume or grass/legume hay. Budget 27 lbs. of 45% Ewe to feed the entire gestation & lactation period. About 1/2 bag of 45% per ewe annually provides her with everything she needs!

#501504 50# (Ship wt. 52 lbs.)

EWE 60 B PREMIX EWE 60 PREMIX

Ewe 60 is a vitamin/mineral premix designed to be used by feed mills and farmers with the capabilities to make feed rations with a grinder/ mixer. Both premixes contain high levels of Vitamin E, Selenium, and all other required nutrients, just like 45% Ewe Supplement. Ewe 60 B contains 2267g/ton of Bovatec. A one ounce feeding rate of Ewe 60 B results in a daily intake level of 70 mg of Bovatec. This level is 4-5 times that of competitors. The 70 mg level will allow you to clean the ewe flock up of cocci prior to lambing and thus the environment into which the lambs are born. This greatly reduces early cocci infections in young lambs. A one ounce feeding rate of Ewe 60 B would provide: 70 mg Bovatec, 50 IU Vitamin E, 11,476 IU Vitamin A, 3,375 IU Vitamin D, 0.0128# Calcium, 0.0038# Phosphorus, 0.70 mg Selenium, etc. All this for \$0.035/ewe/day.

Sample Rations:

Feeding Rate (lbs./hd./day)	Gestation		Lactation	
	1.00	1.50	2.00	2.50
Corn, coarse ground	1455	1535	1615	1665
48% Soybean Meal	400	350	300	250
Ewe 60 B Premix	120	90	60	60
Soybean Oil	25	25	25	25
	2000#	2000#	2000#	2000#

Above rations assume grass hay (11-13%CP) fed in gestation and good legume or grass/legume hay (16-18% CP) fed in lactation. When hay is 20% protein or higher you can reduce or delete the soybean meal; just mixing grain and Ewe 60 Premix. Unless you can buy soybean meal in truck loads it is better to use 45% Supplement.

EWE 60 B PREMIX – Contains Bovatec

#501503 (Ship wt. 62 lbs.) \$ 39.89

EWE 60 PREMIX – Non-Medicated

#501510 (Ship wt. 62 lbs.) \$ 32.20

EWE 10 B PREMIX

Ewe 10 B Premix is a low inclusion premix, ("micro-premix"), that is typically used at 10 lbs. per ton. Ewe 10 B Premix contains only vitamins, selenium, trace minerals and Bovatec. You need to add salt, dical, and limestone to the premix. This would make it equal to Ewe 60 and have all the same attributes and benefits. Ewe 10 B was created as an economical shipping alternative to the 60 lb. bags of Ewe 60 Premix. Therefore it is best suited to our customers who live a long distance away, and have the capabilities for on-farm blending.

Sample Rations:

Feeding Rate (lbs./hd./day)	Gestation		Lactation	
	1.00	1.50	2.00	2.50
Corn, ground	1505	1560	1620	1670
48% Soybean Meal	400	350	300	250
Ewe 10 B Premix	20	15	10	10
Salt	10	10	10	10
Dicalcium Phosphate	10	10	10	10
Limestone	30	30	25	25
Soybean Oil	25	25	25	25
	2000#	2000#	2000#	2000#

Note: Feed Gestation ration with a 12-14% CP hay and Lactation ration with a 16-18% CP hay. If hay is 20% CP or higher you may be able to reduce/eliminate the soybean meal in the ration. Ingredient levels may vary, consult us for help in ration formulation.

EWE 10 B PREMIX– Contains Bovatec

#501511-10 10# (Ship wt. 11 lbs.) \$ 26.78

#501511-50 50# (Ship wt. 52 lbs.) \$ 127.39

EWE 10 PREMIX– Non-Medicated

Special Order

#501512-10 10# (Ship wt. 11 lbs.) \$ 29.28

#501512-50 50# (Ship wt. 52 lbs.) \$ 86.66

EWE 12-30B COMPLETE

This is a complete texturized feed for ewes, made with 45% Ewe Supplement, molasses, and grain. Convenient, ready made formulation for small flocks where on farm mixing is not possible.

#10016 50# (Ship wt. 52 lbs.)

EWE 1200 B PELLET

A complete 12% protein pelleted feed. Clean, dust free pellet is very palatable and is made with highly digestible ingredients, no cheap fillers. Feed EWE 1200 B as the sole source of grain to the ewe flock. This ration can be used in all stages of production. Highly fortified ration contains 30 grams per ton of Bovatec for coccidiosis control. **Special Order**

#531509 50# (Ship wt. 52 lbs.)

LAMB STARTERS

- **Nutrient dense, highly fortified formulas feature special levels and balance of nutrients, including important trace minerals.** Energy and protein intake are the most limiting factors in the growth of baby lambs. Vitamin E levels and coccidiosis control are most critical for good lamb health. Hunter Nutrition has a unique Starter Feed program which addresses these concerns; thereby maximizing lamb performance and improving health.
- **90 grams/ ton of BOVATEC is STANDARD.** Very Effective cocci control is achieved when feeding 1.50 lbs. of our 90 gram starters; which results in a daily intake of 70 mg bovatec. (Starter feeds with only 30 grams bovatec would provide just 22.5 mg bovatec). Feeding instructions=Feed at the rate of 0.33 to 1.55 lbs. per lamb per day to provide 15–70 mg of lasalocid per lamb daily. Feed this ration along with hay in a dry, well lit creep area. (FDA allows 30–70 mg daily intake of bovatec for sheep and lambs).
- **LAMB STARTER FEEDS ALSO AVAILABLE WITH DECCOX**– However we prefer the 90 gram/ton bovatec because of its success and the fact that there will be no cocci break at weaning. Typically we see a coccidiosis out-break when coccidiostats are changed; such as the typical change which occurs when producers switch from a deccox starter to a bovatec grower ration at weaning. Always having the lambs on bovatec prevents this. Call for pricing of Lamb Starters with Deccox.
- **50 IU Vitamin E per pound of feed is STANDARD!** Our Vitamin E level is typically 1.67 times that of the highest fortified competitors feed. High Vitamin E reduces problems with White Muscle Disease, and improves disease resistance.
- **High Energy Formulas = Less feed used and Lambs really bloom.**
- **NO CHEAP FILLERS IN OUR FEED!** Hunter Nutrition uses only highly digestible ingredients. Our customers report faster gains, more bloom, & less health problems with our starters. By making feeds with highly digestible ingredients we assure our customers of the best value for their dollar spent on feed, and the best performance for their lambs. Our starters are not the cheapest per bag– but they are the cheapest in terms of performance– cost per pound gained; which is the true measure of the cost of a feed. Most competitors use high fiber starter feed formulations, in order to keep feed prices low. Since energy is the limiting factor on growth in young lambs, fiber must be kept low and energy (fat) levels high.



SUPER 20 LAMB STARTER 90B

'SUPER 20 LAMB STARTER' is 20% protein and 5% fat. It is made in a tiny mini pellet form for quick acceptance by young lambs. Our pellet is clean, very small, and very palatable. Feed it in a creep area to lambs from birth to about a week after weaning. The added fat in SUPER 20 makes for an energy dense feed, which improves feed conversion, rate of gain, and really blooms up the lambs. SUPER 20 LAMB STARTER can be used as the sole starter feed or in combination with TEXTURIZED LAMB STARTER.

#531888P SUPER 20 Mini-Pellets 50# (Ship wt. 52 lbs.)

18% LAMB STARTER MINI-PELLETS 90B

This is our high quality 18% protein lamb starter. The same high quality ingredients go into the 18% as the SUPER 20– except that it is lower in protein and fat. Don't confuse our 18% pellet with the competitors high fiber/low energy, pellet which often contain NPN, that young lambs cannot utilize. **Special Order**

#531506 50# (Ship wt. 52 lbs.)

TEXTURIZED LAMB STARTER 90B

This is our most popular lamb starter feed. Our 19% Protein Texturized Starter features a small, uniform particle size that other texturized starters lack. It is made with a mini-pellet supplement, cracked and rolled grains and liquid molasses. Lambs really go after our texturized feed without the sorting problems as seen with the competitors texturized feeds. Lambs really gain and bloom on this feed. Use 'Texturized Lamb Starter' as the sole starter feed or in combination with Super 20 Mini-Pellets.

#10001 50# (Ship wt. 52 lbs.)

LAMB 650 SUPPLEMENT

This is a pelleted supplement to make farm blended texturized lamb starter feeds. Use 650 lbs. per ton with grain, liquid molasses and soy oil to make a 19% protein texturized starter. This grain mix will contain: 90 grams Bovatec per ton, 50 IU Vitamin E per lb., and the same nutrient specifications as our complete starter feeds.

#531889 50# (Ship wt. 52 lbs.)

Sample Rations:	Feedmill	Farm Blended
Grain (cracked/ rolled)	1140	1260
Lamb 650 Supplement B	650	650
Soybean Oil	10	40
Liquid Molasses	200	50
	2000#	2000#

LAMB 60-90B PREMIX

A premix for farm blending lamb starter feeds using soybean meal and ground corn. Use one bag (60 lbs.) of premix per ton of lamb starter. This starter feed will contain 90 grams Bovatec/ton, 50 IU Vitamin E/lb., and the same nutrient levels as our complete starter feeds.

#531890 60# (Ship wt. 62 lbs.) **\$ 37.82**

Sample Rations:	20% Starter	18% Starter
Corn, coarse ground	1200	1300
48% Soybean Meal	650	550
Lamb 60-90 Premix	60	60
Dry Molasses	50	50
Soybean Oil	40	40
	2000#	2000#

LAMB GROWER–FINISHER FEEDS

- **Higher vitamin and mineral levels** – Our higher vitamin and trace mineral levels in our Lamb Grower and Finisher Feeds improve health and performance. Optimum mineral levels promote soundness.
- **More digestible ingredients** – For faster gains, better feed utilization, and reduced health problems.
- **Proper Calcium/Phosphorous levels** – All of our Lamb rations have a 2.5 to 1.0 Calcium to Phosphorous ratio which along with correct levels of other ingredients greatly reduces and often eliminates urinary calculi in lambs.

40% LAMB SUPPLEMENT

40 LAMB is a pelleted protein, vitamin, mineral, and bovatec supplement designed especially for lambs. Use 40 Lamb Supplement pellets with your own grain to farm-blend rations for grower/finisher lambs, and replacement ewes and rams. This high protein supplement will save you money ; it only takes 400#/ton of our 40% to make a 15% protein feed. Our competitors usually sell 30–34% protein supplements which require 575–600 lbs/ton to make a 15% protein feed. 40 LAMB contains 150 gram/ton of bovatec, when you use 400#/ton you get a complete feed containing 30 grams/ton of Bovatec. 40 LAMB has higher vitamin and mineral levels and more digestible ingredients which will promote soundness, faster gains, greater feed utilization, and reduce health problems. 40 LAMB has extra calcium and ammonium chloride which gives the finished feed a 2.5 to 1.0 Ca/P ratio to prevent urinary calculi. 40% Lamb also contains vitamins, minerals, salt, and trace elements. Always feed the grain mix below with hay or pasture.

#501506 50# (Ship wt. 52 lbs.)

Sample Ration:	15% Ration
Grain	1600
40% Lamb	400
	2000#

LAMB 55 B PREMIX

Lamb 55 B is a vitamin–mineral premix containing bovatec. It is designed for use by feed mills and farmers for on farm mixing of grower/ finisher lamb rations. Contains Bovatec for the control and prevention of coccidiosis. Use at the rate of (1) 55 lb. bag per ton to make grower/ finisher lamb and replacement ewe rations.

Lamb Rations Using Lamb 55 B

	20% Starter	16% Grower	16% Grower w/ NPN
Corn, ground	1223	1490	1610
48% Soybean Meal	625	425	285
Soy Oil	40	20	20
Dry Molasses	50	0	0
Vitamin E 20, 000	2	0	0
Ammonium Chloride	5	10	10
Urea	0	0	20
Lamb 55 B Premix	55	55	55
	2000#	2000#	2000#

Analysis:

Crude protein %	20.00	16.00
Bovatec grams/ton	30.00	30.00
Calcium %	1.10	0.85
Phosphorous %	0.50	0.35
Vitamin A IU/lb	6800.00	6800.00
Vitamin D IU/lb	2000.00	2000.00
Vitamin E IU/lb.	50.00	30.00

#501501 55# (Ship wt. 57 lbs.) \$ 27.43

16% LAMB RATION

A complete texturized sweet feed containing cracked grains, a pelleted protein supplement and liquid molasses. Feed as a complete grain mix for growing lambs over 70 days old. Often small flock owners buy this complete feed instead of buying 40% Lamb and mixing their own grower rations.

#10006 50# (Ship wt. 52 lbs.)

LAMB 1600 B PELLET

A complete 16% protein pelleted feed in a mini pellet (1/8") form. Clean, dust free pellet is very palatable and is made with highly digestible ingredients, no cheap fillers. Feed LAMB 1600 B to growing/finishing lambs over 70 days of age and to replacement lambs. Contains 30 grams per ton of Bovatec for coccidiosis control. Also contains ammonium chloride for prevention of calculi.

#531508 50# (Ship wt. 52 lbs.)



LAMB 10 B PREMIX

LAMB 10 B PREMIX is a low inclusion (10 lbs/ton) premix designed for clients who are far from us and shipping is cost prohibitive on the 40% Lamb or Lamb 55. This highly fortified micro–premix contains vitamins, trace minerals, selenium, and bovatec. It is designed to make all types of lamb starter, grower, finisher, and replacement ewe rations.

Sample Rations:	20% Starter	16% Grower
Grains (Corn,etc)	1223	1490
48% Soybean Meal	625	425
Limestone	35	35
White Salt	10	10
Lamb 10 B Premix	10	10
Vitamin E 20,000	2	0
Ammonium Chloride	5	10
Dry Molasses	50	0
Soybean Oil	40	20
	2000#	2000#

Same analysis as Lamb 55B Premix Rations

#501513-10 10# (Ship Wt. 11 lbs.) \$ 24.72
#501513-50 50# (Ship Wt. 52 lbs.) \$ 104.58

SHOW SHEEP FEEDS

- **Precise Formulations** - All nutrients are balanced and at optimum levels. Proper nutrient levels are important for improving performance, preventing disease by strengthening the immune system, increased bloom, vigor, preventing white muscle disease, preventing goiter, increasing feed utilization, and reducing off feed times.
- **Unique Blend of Protein Sources:** Our blended protein is composed of: (1) RDG- (Rumen degraded protein), (2) Rumen By-pass protein, and (3) a small amount of NPN which goes directly to rumen microbial protein. All types are included at the proper levels and precisely balanced. Our protein sources increase muscling and improve feed conversion.
- **All show lamb feeds contain 30 g/ton of Bovatec as a coccidiostat.** This level of Bovatec will keep cocci infestation levels low. Cocci infestations reduce performance, slow gain, and open the animal up for other diseases, like pneumonia. Custom mixes of our Show Lamb Feeds are available with Deccox; call for pricing.
- **All texturized show lamb feeds are sweet feeds made with the highest quality ingredients available.** We use only the best rolled and cracked grains, with a higher level of barley than our competitors. Because we include soy oil and liquid molasses in all of our formulations, our feeds are very palatable, dust free, and free of fines.



18 SHOW LAMB

We have updated our most popular show feed. **The 'new' 18 Show Lamb will improve both performance and show ring results.** 18 Show Lamb now has increased barley (which gives it a great 'look' & texture) and an increased fiber level to address the needs of today's market lambs. 18 Show Lamb builds on it's long record of feeding success with these characteristics.

18 Show Lamb's by pass protein aids in building well muscled lambs. Our high levels of vitamins and minerals, along with rumen health improving ingredients will give every lamb the best opportunity to stay on feed and be healthy during the stressful show season. We have **added Aspergillus Oryzae and Actigen** (the concentrated form of Bio-Mos) to increase beneficial gut bacteria, reduce pathogens, improve feed utilization & digestibility, improve level of microbial protein available to the small intestine, and greatly enhance the health and development of the rumen. We have also **added a beneficial probiotic** (beneficial bacteria) to improve rumen health, disease resistance, livestock performance, and aid in a reduction of pathogens.

#10003 50#

(Ship wt. 52 lbs.)

SHOW LAMB 2000

This is our texturized holding feed for show lambs. Feed as the second stage in your show lamb feeding program. SHOW LAMB 2000 is best used to control rate of gain and fat cover on lambs, while maintaining muscling. The formulation is similar to 18 Show Lamb, except that '2000' contains less corn, more oats, and added cottonseed hulls. Therefore, 2000 is a lower calorie, lower energy, higher fiber feed. Feed about 3 lbs./day with fresh water and a small amount of hay. When holding weight on show lambs, you can topdress 4 oz. of 'TOPLINE' and 2 oz. of SHOW PRO per day. (See page 9)

#10004 50#

(Ship wt. 52 lbs.)

SHOW SHEEP 165

A texturized show feed for show breeding stock and replacement ewes. This feed contains a fiber level in between the levels contained in 18 Show Lamb and Show Lamb 2000. Contains cracked corn, oats, barley, a pelleted protein supplement, cotton seed hulls and liquid molasses. This clean, dust free formulation can be fed to show lambs, but is specifically formulated for show and replacement ewe lambs and ram lambs. Feed from 6 months to 2 years of age. Show Sheep 165 is 16.5% protein.

#10002 50#

(Ship wt. 52 lbs.)



17% SHOW LAMB

Use 17% Show Lamb for feeding situations where a lower protein ration is desired. 17% Show Lamb contains cracked/rolled grains, our special show lamb supplement pellet, rolled barley, liquid molasses, and cottonseed hulls. The key differences between 18 Show Lamb and 17% is the lower protein and added cottonseed hulls. 17% Show Lamb also includes Amaferm, Actigen/Bio-Mos, & Probiotic. 17% Show Lamb contains rumen by-pass protein sources to build muscle and let a lamb develop to it's genetic potential. 17% has high levels of vitamins and minerals, along with rumen health improving ingredients to keep lambs healthy and on feed during the challenging show season.

#10005 50#

(Ship wt. 52 lbs.)

To view more winners and our rewards program, visit hunternutrition.com

CONCEPTIO BREEDING PRODUCTS

COMPLETE FLUSHING RATION FOR EWES IN AI AND ET PROGRAMS

CONCEPTIO

- Flushing Ration For Ewes In AI and ET Programs.
- Contains toxic binders, probiotics, and prebiotics to improve health breeding efficiency and to reduce stillborns and abortions.

- Organic Trace Minerals.
- Increased levels of importance reproductive nutrients including: Selenium, Vitamin E, Manganese, and Zinc.
- Enhances ovulation, embryo survival, and birthing rate at a reasonable price.

While you do not have to buy a 'special' feed or mineral – You must meet the nutritional needs of breeding animals. Nutritional needs greater. A ewe needs 45% More Dry Matter, 40% More Protein and 56% More Energy for flushing than maintenance. Ful-filling the increased nutritional needs of 'breeding' can be done with our standard products. I like flocks to be on year around high levels of important reproduction nutrients such as selenium, vitamin E, manganese, and zinc. This is a better approach than minimally feeding stock during maintenance and then suddenly needing to improve nutrition at breeding time. This is when producers might be pushed into buying a special breeding supplement, the seller usually says 'for must buy this to be successful'. Whether you are breeding naturally or doing AI/ET work nutritional needs are higher, but those

needs can be met with our available well-fortified feeds.

If you are on our feeding program you are on a program which meets the demands of breeding, AI, and ET. However, In recent years I have formulated some products with even higher levels of nutrients to address some producer needs. These were made on a custom basis in previous years. We are now making these floor stock products during breeding season. We have feeds for producers who want an even higher fortified program, especially for those doing AI and Embryo Transfer. These feeds have higher selenium, vitamin E, manganese, and zinc. They also include probiotics, prebiotics, and toxin binders to improve overall health, efficiency, and reduce stillborn and abortions.

CONCEPTIO COMPLETE EWE PELLET

Conceptio Complete Ewe Pellet is fed as the sole grain before and during breeding.

GUARANTEED ANALYSIS

Crude Protein (not less than)	12.00%
Crude Fat (not less than)	3.00%
Crude Fiber (not more than)	18.00%
Calcium (not more than)1.36% (not less than)	0.86%
Phosphorus (not less than)	0.20%
Salt (not more than).....0.75% (not less than)	0.25%
Selenium, min	0.80 ppm
Vitamin A, min	10,000 IU/lb
Vitamin D, min	3000 IU/lb
Vitamin E, min	50 IU/lb

#501511 50#

(Ship wt. 52 lbs.)



CONCEPTIO EWE SUPPLEMENT PELLET

Conceptio Ewe Supplement Pellet is a 36% protein pellet fed at about 0.25 lbs per ewe/day and used to farm blend feeds.

GUARANTEED ANALYSIS

Crude Protein (not less than).....	36.00%
Crude Fat (not less than)	1.25%
Crude Fiber (not more than)	5.00%
Calcium (not more than).....4.50%...(not less than)	3.00%
Phosphorus (not less than).....	0.40%
Salt (not less than).....1.50...(not more than)	2.50%
Selenium, min	9.00 ppm
Vitamin A, min	40,000 IU/lb
Vitamin D3, min	12,000 IU/lb
Vitamin E, min	400 IU/lb

#501518 50#

(Ship wt. 52 lbs.)

CONCEPTIO CUSTOMER TESTIMONIALS

"We had very good results using the Conceptio pellets this past breeding season in 2024. The A.I. ewes had a conception rate of 90 percent. The recip ewes had a retention rate of 90 percent as well. With 4 flushes this year we didn't have a single recip rejected. Between the A.I. and flushes every technician commented on the ewes, and asked what we were feeding. All of our customers had great results as well. I highly recommend the conceptio pellets for your next breeding season."

Brad Terhaar

"I have been using the Hunter Nutrition Conceptio Ewe Pellet in my feed ration for the past 2 breeding seasons. I have had great success with utilizing this product and AI success rates have been between 75-85%. Having a smaller flock, cost is always major factor but this product is much more affordable than similar products from other sources. The Conceptio pellet itself is very high quality and very palatable. I would highly recommend to other breeders!"

Chris Downing

2024 SHOW WINNERS & WINNERS PROGRAM

Congratulations to Lucas Wilson, who took Grand Champion Market Lamb, at the 2024 St. Joseph County, Indiana Fair.



Congratulations to Manger Farms, who took Grand Champion Dorper Ram, at the 2024 Ohio State Fair.

Congratulations to Kirsten Hatfield, who took Grand Champion Wether, at the 2024 Youth Sheep Expo.



Congratulations to Kessler Farms, who took Champion and Reserve Champion North Country Cheviot Breeding Ewe, at the 2024 Indiana State Fair.

Congratulations to Laurie Baughman, who took Champion Lincoln Ewe, at the 2024 Ohio State Fair.



HUNTER REWARDS PROGRAM

Are you taking part in a sanctioned 4-H, FFA, or Junior Livestock Association? Animals fed Hunter Nutrition branded feed products for at least the previous 60 days before the show are eligible. Check out our website for details on entry into the program. We love to promote and share the success of our customers.

hunternutrition.com

SAMPLE CLUB LAMB FEEDING PROGRAM

This is only a guideline, as actual feeding rates will vary according to the desired show weight, age and genetics of the lambs you are feeding. Many people use a very simple program of full feeding **18 SHOW LAMB** or **17% SHOW LAMB** to about 80-90% of show weight and then they limit feed to 2.5 to 3.0 lbs and topdress **TOPLINE** and **SHOW PRO**. The program below is more complicated, but illustrates the fine tuning you can do with our wide selection of products.

STAGE 1: Full Feed (about 3.5 to 4 pounds) of **18 SHOW LAMB** or **17% SHOW LAMB** + small fistful of good hay. **TOPLINE** may also be fed if at 0.25 pound and **SHOW PRO** at 1 ounce if desired.

STAGE 2: At 80-90% of show weight — Feed 50% **18 SHOW LAMB** or **17% SHOW LAMB** and 50% **SHOW LAMB 2000** + hay + 0.25 to 0.50 pound. **TOPLINE** and 1-2 ounces **SHOW PRO**.

STAGE 3 (Holding): At or very near show weight — Feed 3 pounds **SHOW LAMB 2000** + hay + 0.25 to 0.70 pound 4-6 ounces **TOPLINE** and 1-2 ounces **SHOW PRO**.

SHOW FEED ADDITIVES

TOPLINE- PELLETED SHOW SUPPLEMENT

TOPLINE KEEPS THEIR TOPS! IMPROVES MUSCLE TONE, ENHANCES ANIMAL HEALTH, REDUCES OFF FEED TIMES, and ADDS BLOOM.

TOPLINE CONTAINS—

Amaferm 

Actigen (MOS Pre-biotic) ACTIGEN®

Bloom Ingredients

Vitamins & Minerals

Enzymes & Yeast Culture

Rumen Buffers



TOPLINE

A pelleted show animal supplement that is fed in addition to the animals normal feed. Formulated for show lambs, calves, pigs, and goats; to aid in improving and maintaining firmness of muscling of the animals topline. The special protein sources, which include multiple bypass protein sources, allow TOPLINE to help maintain the 'tops' of animals that are being worked and/or having weight held for a show. Topline contains ingredients which aid in stimulating appetite, improving feed utilization, improving overall health and disease resistance, keeping animals fresh, healthy and on feed, and maintaining a normal rumen pH. **In 2017 we have added BioZyme's Amaferm and AllTech's Actigen/Bio-Mos – these powerful pre-biotics increase beneficial gut bacteria, reduce pathogens, improve feed utilization & digestability, improve level of microbial protein available to the small intestine, and greatly enhance the health and development of the all important rumen.** Use about 4–8 oz. per animal/day. For example: If you had been feeding a lamb 3.5 lbs. of an 18% Show Feed and you have reduced his daily feed intake to 2.5 lbs. in order to maintain his show weight, you would need to topdress 8 oz. of TOPLINE daily (split between two feedings) in order to maintain proper protein and lysine intakes which will maintain the muscling of his top. Typically lambs and pigs would need 4 oz. of TOPLINE while these animals are being full fed. Then when animals need weight gain held you would increase TOPLINE feeding rates.

Feeding Directions: The enclosed measuring cup holds 4 oz. when filled to the top. Feed animals at the following rates:

Show Lambs— 4–8 oz./day Show Pigs— 4–8 oz./day
Show Calves— 4 oz./day Show Goats— 3–4 oz./day

Price subject to ingredient cost fluctuations

#501508 50# bag (Ship wt. 52 lbs.) \$ 45.88
#501508B 30# bucket (Ship wt. 32 lbs.) \$ 39.30

FILL PELLETT

Show Pro "Fill Pellet" is a pelleted show animal supplement that is fed in addition to the animal's normal feed. "Fill Pellet" is fed to Show Calves, Pigs, Goats and Lambs to aid in improving the "full appearance" of those animals. "Fill Pellet" expands and retains water in the animal's stomach, which is especially helpful in keeping a full appearance when limit feeding. Feed 'Fill Pellet' as a replacement to beet pulp. 'Fill Pellet' also contains live yeast culture, enzymes, lactobacillus, and rumen buffers which aid in fiber digestion, improve feed utilization, and maintain normal rumen PH. The B vitamins stimulate appetite and help keep animals on feed. 'Fill Pellet' also contains ingredients which aid in stimulating appetite, improving feed utilization, improving bloom, keeping animals fresh, healthy, on feed and maintaining normal rumen ph. 'Fill Pellet' is a better and more economical choice than straight beet pulp for fill. 'Fill Pellet' with its probiotics, enzymes, higher protein & fat levels and B vitamins has additional advantages over feeding straight beet pulp.



#501591 50# bag (Ship wt. 52 lbs.) \$ 18.85

SHOW PRO TOP-DRESS

***VITAMINS *MINERALS *YEAST CULTURE *ENZYMES**
***PROBIOTICS *RUMEN BUFFERS *AMAFERM **
***ACTIGEN PRE-BIOTICS ACTIGEN®**
***LACTO-SACC**

- Keeps Animals Healthy on Feed
- High B Vitamin's Stimulate Appetite
- Aids in Digestion
- Improves Hair Coat, Adds Bloom
- Aids in Bone & Structure Development



SHOW PRO 'TOPDRESS'

Show Pro Topdress is formulated for Lambs, Calves & Goats

Show Pro Topdress is the **cleanest, dust-free, mineral-based top-dress on the market today.** SHOW PRO contains a unique blend of ingredients to help your show animals stay competitive even under stressful conditions. Show Pro is a big help when holding animals for show. Whenever you reduce feed intake to hold a show animals weight you are reducing important vitamin and mineral intake. Show Pro Topdress can replace those lost vitamins and minerals with a small feeding rate of a few ounces. SHOW PRO aids in fiber digestion, improves feed utilization, and maintains normal rumen pH. Regular use of SHOW PRO can aid in maintaining muscle tone, improved hair coat, add bloom, and keeps animals fresh and healthy and on feed. Show Pro Todress has always contained important probiotics(lacto bacillus) which improve overall animal health and disease/stress resistant. Probiotics were a large part of Show Pro's effective ingredients long before "probiotics" became popular. **We include Amaferm and AllTech's Actigen/Bio Mos – these powerful pre-biotic's increases beneficial gut bacteria, reduce pathogens, improve feed utilization & digestability, improve level of microbial protein available to the small intestine, and greatly enhance the health and development of the all important rumen.** Show Pro Top Dress includes AllTech's Lacto-Sacc, a proven source of live beneficial bacteria which reduces pathogens, improves gut health, and livestock performance.

Feeding Directions: A typical feeding rate is 1/4 cup per animal per feeding on top of feed. This is equal to 1 ounce per feeding or 2 ounces daily consumption. A 30 lb. bucket will feed 2 animals for 120 days or 3 animals for 80 days when fed at the 2 oz./head/day rate.

Show Lambs: 1-4 oz./day Show Calves: 1-2 oz./day Show Goats: 1-3 oz./day

Sample Feeding Rates of Show Pro Topdress for Show Animals

Feeding Suggestion	Amount of Show Pro per day
Animals on Full Feed	1-2 ounces
Limit Feeding Situations	2-4 ounces
Severe Limit Feeding	3-6 ounces

Guaranteed Analysis

Crude Protein (not less than).....	7.50%	Salt.....	Maximum 7.00%
Crude Fat (not less than).....	1.40%	Vitamin A.....	67,000 IU/lb
Crude Fiber (not less than).....	5.00%	Vitamin D.....	19,500 IU/lb
Calcium (Max. 11.0%).....	Min. 10.00%	Vitamin E.....	300 IU/lb
Phosphorus.....	Min. 4.20%		

#501590-10 10# bucket (Ship wt. 11 lbs.) \$ 20.59
#501590-30 30# bucket (Ship wt. 32 lbs.) \$ 49.62
#501590-50 50# bag (Ship wt. 52 lbs.) \$ 57.62

SHOW PRO 'GOLD'

Show Pro Gold is a soy oil based, flavored liquid, feed supplement. Use as a source of energy, to reduce dust in feeds, improve feed conversion, & palatability.

Analysis

Fat99.0 %
Met. Energy 4000Kcal/lb.
Vitamin A 80,000 IU/lb.
Vitamin D 20,000 IU/lb.
Vitamin E 20 IU/lb.



Directions: Add to feed at the rate of 10–40 lbs. per ton of complete feed, or top-dress at the rate of 0.5–2.0% of total daily feed consumption.

#501593 40# bucket (Ship wt. 42 lbs.) \$ 60.10
#501593 Bulk 2000# tote (Ship wt. 2100 lbs.) \$ 2003.30

BEEF CATTLE & SHOW CALF FEED

- **Our Cattle and Show Calf Feeding Programs are different** – Most companies formulate cattle feeds based on being able to sell them at a low price. We formulate feed that will allow animals to reach their genetic potential. This means feeds that are fortified above NRC and traditional levels. Highly digestible ingredients are all we use, no cheap fillers, and no least cost formulation!
- **Optimum Vitamin & Trace Mineral Levels** – Our higher levels of vitamins (especially A & E) along with balanced trace elements, like zinc, improve skin and hair coat. Typically, our feeds contain 1.5 times the level Vit. A of other feeds!
- **Our Show Calf Feeds Stay Fresh Longer, Uniform Texture, More Palatable** – Our feeds are formulated to have less dry-out than competitors. Calves hair coats are full and shiny. With added mold inhibitors, we have an exceptionally low incidence of moldy feed even during the hottest summers. Our superior quality and unique blend of ingredients, as well as our quality control, result in consistent and palatable rations. Calves do not experience off-feed times as they do with the competitor's feeds.
- **Proper Fiber Levels & Highly Digestible** – We have balanced rations with the right amount of Fat, Fiber, TDN, etc. Unlike many competitors, we use the right amounts of Cottonseed Hulls in our Show Calf Feeds. Too much fiber results in low gains, poor hair coat, and high feed cost due to poor feed conversion. Too little fiber produces off-feed times and an unbalanced rumen PH.

SHOW CATTLE FEEDS

SHOW CALF 4000

'Our Moderate Fiber/Energy Formula'

This is an intermediate fiber and energy texturized feed, perfectly suited for Heifers and Steers in many show calf feeding situations. Show Calf 4000 is used to start calves on, fed to heifers all the way through, and fed to Steer's when you want moderate gain without too much cover. Steer's are often started on '4000'; then go to '5000' for fast gain and development– then back to '4000' to hold them at a desired show weight. Show Calf 4000 contains steam rolled corn, cracked corn, barley, crimped oats, cottonseed hulls, pelleted supplement, liquid supplement, and liquid molasses.

#400001 50#

(Ship wt. 52 lbs.)



SHOW CALF 5000

'Our Fast Gain/Extra Condition Formula'

This texturized feed is higher in energy and lower in fiber than Show Calf 4000. Use Show Calf 5000 when calves need very fast gains and extra cover. Feed to steers after they have been started on feed. Show Calf 5000 can also be fed to heifers which need extra weight gain and cover. Show Calf 5000 is a higher energy feed which produces a faster gain, it can also put down more cover (if desired) by feeding at a high level. Show Calf 5000 contains steam rolled corn, cracked corn, barley, crimped oats, cottonseed hulls, pelleted supplement, liquid supplement, and liquid molasses.

#400002 50#

(Ship wt. 52 lbs.)

SHOW CALF DEVELOPER

'Our Higher Fiber/More Fill Ration'

Show Calf Developer is 13% Protein, 10% Fiber, and 2.75% Fat. This texturized ration is lower energy and higher fiber ration. Show Calf Developer is fed to older animals which need a reduced rate of gain and benefit from a higher fiber diet.

#400003 50#

(Ship wt. 52 lbs.)

BEEF CATTLE PELLETTED SUPPLEMENTS

- **Our Pelleted Supplements Are Higher Fortified Than The Competitors** – A lot of companies make cattle supplement pellets, ours are different. Producers report better results in terms of animals performance, bloom, and herd health, and say they can see the difference.
- **Fixed Pelleted Supplement Formulas** – We do not least cost formulate our supplements. Our formula improves animal performance, reduces off feed times and makes a good pellet. Fixed Formulas offer advantages of consistent feed quality and animal performance.

34% BEEF SUPPLEMENT

Our own 34% Beef Supplement is higher fortified in vitamins and minerals than the other 34% supplements. 34% Beef Supplement is highly digestible, nutritionally superior, and contains no cheap fillers. Our high levels of vitamins (especially A & E) along with optimum trace mineral levels improve eyes, hair coat, and immune response. 34% Beef Supplement pellet is all natural protein and ideal for making all cattle rations. Our pellet is clean and dust free. Also available with medications. Feed 34% Beef at 1-2 pounds per head daily.

#400006 34% Beef Supplement Bagged or Bulk

#400008 34% Beef Supplement w/Rumensin Bagged or Bulk

Sample Rations:	12% Ration	13% Ration	14% Ration
Corn/Grains	1700	1625	1550
34% Beef	300	375	450
	2000#	2000#	2000#

40% BEEF SUPPLEMENT 100R

This is a pelleted supplement containing some urea and Rumensin. 40% Beef Supplement is the recommended grower-finisher supplement for ruminating beef and dairy beef calves. The low feeding rate of this concentrated supplement results in maximum performance and reduced cost per head per day. High levels of Vitamin E in 40% Beef Supplement aid in maintaining cut quality and color and the delayed discoloration of beef in the meat case. Feed at one pound per head per day.

#400011 50#

(Ship wt. 52 lbs.)

Sample Rations:	11% Ration	12.5% Ration	13.5% Ration
Corn/Grains	1800	1700	1650
40% Beef	200	300	350
	2000#	2000#	2000#

BEEF FEEDLOT SUPPLEMENT

Let us formulate your custom supplement based on the animals you are feeding and your forage/feed test results. Custom supplements are formulated to balance your on farm feedstuffs (silage, hay, by-products, grains). Your calves weight, desired rate of gain, and feed conversion goals are considered in the formulation of these custom supplements. Pelleted Supplements, Premix/Basemixes are available in bulk or bagged form.

Bagged or Bulk

BEEF PREMIX & MINERALS

- **Our Cattle and Show Calf Feeding Programs are different** – Most companies formulate cattle feeds based on being able to sell them at a low price. We formulate feed that will allow animals to reach their genetic potential. This means feeds that are fortified above NRC and traditional levels. Highly digestible ingredients are all we use, no cheap fillers, and no least cost formulation!
- **Optimum Vitamin & Trace Mineral Levels** – Our higher levels of vitamins (especially A & E) along with balanced trace elements, like zinc, improve skin and hair coat. Typically, our feeds contain 1.5 times the level Vit. A of other feeds!
- **Palatable, Consistent, Clean, and Dust Free Feeds!**



2:1 BEEF MINERAL

Premium Quality Free Choice Mineral.

A complete free choice mineral with all required vitamins and minerals. This exceptional high quality product has uniform particle size of ingredients and added mineral oil to avoid separation, reduce dust and improve consumption. Every 3 ounces of Beef Mineral provides the maximum FDA allowed selenium level for Beef cows at 3.0 mg. The higher selenium level improves many immune response functions and reproductive performance. To prevent goiter and to aid in improvement of reproductive efficiency, Iodine is included. We have increased our Zinc and Manganese levels in all versions of Beef Mineral. Zinc plays a major role in animal health. Zinc is also important in maintaining hoof health, strength, and function. Manganese is very important to reproductive performance. Without adequate Manganese animals will have delayed estrus and reduced conception rates. All versions of Beef Mineral also contain Magnesium, Potassium, Sulfur, Iron, and Cobalt.

Calcium	min. 15%	Selenium	40 ppm
Phosphorous	min. 7.0%	Vitamin A.....	300,000 IU/lb
Salt	max. 21%	Vitamin D	100,000 IU/lb
Magnesium.....	2.45%	Vitamin E.....	400 IU/lb
Potassium.....	1.0%	+ Trace Minerals	

#321651 50# (Ship wt. 52 lbs.) \$ 31.99

2:1 BEEF MINERAL WITH ALTOSID®

(Fly Control)

2:1 Beef Mineral with added Altosid®. Altosid is an oral larvicide. Start feeding the Altosid (or other oral larvicide) 4 weeks prior to fly season. The oral larvicide goes thru the animal into its manure, when fly eggs hatch in this manure, the larvae are killed by the larvicide.

#321653 50# (Ship wt. 52 lbs.) \$ 35.63

Altosid® is a registered trademark of Wellmark International

2:1 BEEF MINERAL HIGH MAGNESIUM

Our High Magnesium mineral prevents and stops losses due to grass tetany.

#321655 50# (Ship wt. 52 lbs.) \$ 33.32

2:1 BEEF MINERAL WITH AUREOMYCIN + ALTOSID®

Our 2:1 Beef Mineral with both Aureomycin(Chlortetracycline) and Altosid(S-Methoprene). Excellent product to control both flies and pinkeye in cattle. **Special Order - VFD REQUIRED**

#321654 50# (Ship wt. 52 lbs.) \$ 39.99

BEEF COW CALF MINERAL

A 4% Phosphorous mineral with 1200 ppm copper. **Special Order.**

321660 50# (Ship wt. 52 lbs.) \$ Call

BEEF BREEDER MINERAL AO

A 6% Phosphorous mineral with 2500 ppm copper and Amaferm. Producers like this mineral for breeding and summer heat stress. **Seasonal or Special Order.**

321661 50# (Ship wt. 52 lbs.) \$ Call

BEEF CO-PRODUCT BALANCER PREMIX 1200 R

Our Co-Product Balancer Premix contains 1200 grams per ton of rumensin to control coccidiosis and improve feed conversion. Use Co-Product Balance Premix to balance rations containing DDG's, Soy Hulls, Gluten, and/or Wet Distillers. Co-Product Balancer premix has the right amount of minerals, vitamins, and trace elements for optimal cattle performance. Feed at the rate of 0.625 lbs per calf per day. Typical use is one 50# bag per TMR mixer if calves are eating 20-25 lbs of TMR ration daily.

#321656 50# (Ship wt. 52 lbs.) \$ 17.95

BEEF PREMIX 50 R-1200

Beef Premix 50R-1200 contains 1200 grams per ton of rumensin to control coccidiosis. Use Beef Premix 50R-1200 to make grain mixes and TMR rations with corn silage and haylage. Beef Premix 50R-1200 contains mineral, vitamins, and trace elements. Feed at the rate of 0.625 lbs per calf per day. Use one 50# bag of premix per ton of feed to provide 0.625 lbs. per head per day of premix.

#321657 50# (Ship wt. 52 lbs.) \$ 18.19

BEEF CATTLE FEED & SUPPLIES

BEEF CATTLE FEEDING PROGRAM

BEEF COW PELLET

This is a highly fortified pellet most often used as the winter grain mix for Beef Cow Herds. Beef Cow Pellet is made with soy hulls, ddgs, grains, minerals, trace elements, and vitamins. Producers use Beef Cow Pellet to supplement existing grain and forage. Beef Cow Pellet is well fortified with minerals, all trace elements, and vitamins.



#400009 50# bag or bulk

CALF FEEDS

14% CALF CREEP PELLET W/BOVATEC

BEST SELLER. Our 14% protein calf creep pellet that is highly palatable, is well fortified, and has a good conversion rate. Calves eat this pellet very well and have excellent gain.



#400012 50# bag or bulk

BEEF CALF CREEP W/BOVATEC

This is our popular texturized creep feed which is floor stock. Beef Calf Creep is a clean, consistent feed that the calves really go to, and perform well on. Beef Calf Creep is very palatable and contains Bovatec for coccidiosis control. Beef Calf Creep is 13.5% protein and 3.5% fat with optimum levels of vitamins, selenium, and trace minerals. Quality of manufacturing and high nutrient fortification makes this a feed that will get the calves off to a quick start and keep them performing well.

#400010 50# bag

12% CALF CREEP PELLET B

12% Calf Creep Pellet is a 12% protein pellet for older calves on creep or situations where a lower protein creep feed is needed. Contains bovatec for coccidiosis control, also available with rumensin, deccox, or aureomycin. Highly fortified, clean dust free pellet improves health and performance.

#400018 bulk pellets

13% CALF GROWER PELLET 60R

13% Calf Grower Pellet 60R is a 13% protein pellet for older calves on creep or situations where a lower protein creep feed is needed. Contains rumensin for coccidiosis control, also available with other medications. Highly fortified, clean, dust free pellet improves health and performance of growing and finishing calves.

#400017 bulk pellets

CALF MILK REPLACER

Guaranteed Analysis:

Crude Protein, Min.....	22.00%
Crude Fat, Min.....	20.00%
Crude Fiber, Max.....	0.15%
Calcium, Min.....	0.75%
Calcium, Max.....	1.25%
Phosphorus, Min.....	0.70%
Vitamin A, Min.....	35,000 IU/lb
Vitamin D3, Min.....	7,500 IU/lb
Vitamin E, Min.....	150 IU/lb

Price subject to ingredient cost fluctuations. Call for volume pricing.

#3045 Calf Milk Replacer 50# (Ship wt 52 lbs.) \$ Call



CALF ELECTROLYTE PACK

Made by Merrick's, it is a source of live, viable, naturally occurring micro-organisms. Use for treatment of stressed and sick/scouring calves.

#2060 5# pail (Ship wt. 6 lb.) \$ 38.00

* Also available in 100# drum. Special Order



PRIVERMECTIN CATTLE POUR ON

For the treatment and control of gastrointestinal roundworms (including inhibited Ostertagia ostertagi), lungworms, grubs, horn flies, sucking and biting lice and sarcoptic mange mites in cattle. (Safe for pregnant cattle). 48 day withdrawal. Dosage: 1 ml per 22 lbs.

#3002-1000 1 Liter (Ship wt. 4 lbs.) \$ 33.21
#3002-5000 5 Liters (Ship wt. 15 lbs.) \$ Call



CL COW REPLACER

CL Cow Replacer should be used on newborns who receive an inadequate supply of colostrum. CL Cow Replacer is a complete nutrition and lactobacillus replacement. CL Cow Replacer is all milk protein, pH adjusted to allow a more natural intestinal compatibility.

#2070 250 g. (Ship wt. 1 lb.) \$ 19.00



SURVIVE! FOR CALVES

Our multi-species Survive! oral Energy and Vitamin E Supplement works great for newborn calves, and sick or weak adult cattle. Dose every calf at birth with five pumps(20ml): which provides 2,075 IU Vitamin E, 18,900 IU Vitamin A, 4,700 IU Vitamin D, and one of the highest levels of energy available. Survive! should be given at birth. Survive! is made with oil, instead of propylene glycol, to be gentler on a calves' stomach, and it is also nutritionally superior.

#500119 (Ship wt. 1.4 lbs) \$ 22.00
#500119CS case of 12 (Ship wt. 14 lbs) \$ 234.00



Congratulations to Kessler Farms, who took Grand Champion County Breed Heifer, and Reserve Grand Champion Heifer, at the 2024 LaPorte County, Indiana Fair.

DAIRY & DAIRY BEEF FEEDS

- **Our Dairy/Dairy Beef Feeds Are Better Fortified For Optimum Performance.** Many companies make least cost feeds and sell on price. We are concerned with the true cost to a producer, 'the cost per pound of gain'.
- **Optimum Vitamin & Trace Mineral Levels** – Our higher levels of vitamins (especially A & E) along with balanced trace elements, like zinc, improve skin and hair coat. Typically, our feeds contain 1.5 times the level Vit. A of other feeds!
- **Texturized Feeds Are Palatable, Clean, And Dust Free.** Our Dairy Calf Starters are designed for early acceptance to get calves on feed quick. The sooner calves start on feed, the quicker you get rumen development so that weaning goes well and calves can move to grower/finisher rations.
- **Pelleted Feeds Are Free Of Fines And Dust.** Our pelleted feeds are carefully made to avoid fines and the resulting bloat often seen in young calves. Several different pelleted feeds can be made with varying protein, fat, and medication desired.



18% CALF STARTER PELLET B

A pelleted calf starter pellet fed to dairy beef calves from birth to about 600 lbs. A clean dust and fine free pellet for maximum performance without coughing and bloating issues often seen with other pelleted feeds. **Special Order**

#400014 50# bag or bulk

16% CALF STARTER PELLET B

A pelleted calf starter pellet fed to dairy beef calves after the 18% Calf and when a lower protein feed is desired. A clean dust and fine free pellet for maximum performance without coughing and bloating issues often seen with other pelleted feeds. **Special Order**

#400016 50# bag or bulk

20% DAIRY CALF STARTER B

This is our 'early start' calf feed. Use 20% Calf Starter as soon as calves will start eating and while on milk replacer. 20% Dairy Calf Starter is a texturized calf starter made with liquid molasses, cracked and rolled grains including roasted soybeans. A palatable, clean, and fine free feed is also available with other medications. **Special Order**

#400013 50# (Ship wt. 52 lbs.)

18% DAIRY CALF STARTER 30B

Feed 18% Dairy Calf Starter as soon as calves will start eating and while on milk replacer. The 18% Calf is often fed after 20%, but it can be used as the first feed if desired. 18% Dairy Calf Starter is a texturized calf starter made with liquid molasses, cracked and rolled grains including roasted soybeans. A palatable, clean, and fine free feed is also available with other medications.

#400015 50# (Ship wt. 52 lbs.)

CALF ALLY ELECTROLYTES

Calf Ally is a nutritional supplement for calves suffering from scours, shipping fever, hot weather conditions, loss of appetite, and other stress related problems. It provides a supplemental source of electrolytes, nutrients, energy, and beneficial bacteria whenever they are needed and helps support water retention and proper fluid levels.

#3041 25# bag



(Ship wt. 27 lbs.)

COMMODITY PELLETS

SOY HULL PELLET

Soy hull pellets are pelleted soy hulls and are a high energy fiber source. They can replace hay and/or grain and often replace corn, oats, and cottonseed hulls.



Crude Protein (not less than).....	11.00%
Crude Fat (not less than).....1.50% (not more than)	2.50%
Crude Fiber (not less than).....31.00% (not more than)	35.00%

#1022 50# or bulk (Ship wt. 52 lbs.) \$ Call

SOY HULL/ DDG PELLETS

Pellet consisting of Soy Hulls and Dried Distillers Grains. These are high in fiber and a good supplement for livestock. They can replace hay and/or grain in the diet. Available in bulk or bulk bags.

DDG PELLETS

Pelleted dried distiller's grains. Good supplement for hay and/or feed in the diet. Available in bulk or bulk bags.

SEE PAGES 28-33 FOR ANIMAL HEALTH & SUPPLIES

BEEF CATTLE HERD PROGRAM

TROUBLESHOOTING: SPRING AND SUMMER HEALTH AND NUTRITIONAL CONCERNS

Spring is always a time of renewal and the hope of a good growing season. However the new season does create animal health and nutrition concerns. Concerns with performance (gain), grass tetany, fly season, and bloat should be addressed with preventative measures.

Don't be fooled by the lush spring grass growth on your pastures. The early spring forage is mostly water and thus low in nutritional value. Animal performance suffers due to the inability to eat enough of the wet forage to meet dry matter, mineral, and energy needs. Providing free choice hay for at least two of days prior to turn out can prevent bloat. Continue feeding hay as a source of dry matter to maintain performance. Feeding a small amount of grain as a source of energy is also very helpful as a supplement to spring pasture.

The fast growing, high moisture pasture and its diluted nutritional value can cause grass tetany. This magnesium deficiency causes neurological problems; 'grass staggers', convulsions, and possibly death. Magnesium is needed for many physiological functions. Magnesium is a component of bone, important to nervous system function, and needed for enzyme function. Providing magnesium through the feed and/or with free choice mineral is very important. Animals need to be on adequate magnesium for a few weeks prior to spring grazing. We manufacture a High Magnesium 2:1 Beef Mineral for cow herds to address tetany in cattle.

Spring is also the time to begin your fly control program. You should use at least two of the three control methods. Control flies with oral larvicides, residual premise spray, and/or fly 'catchers'. When using an oral larvicide such as Rabon or Altosid, an early start is critical to success. Oral larvicides go 'through' the animal into its manure, when fly eggs hatch in this manure, the larvae are killed by the larvicide. Start animals on the oral larvicide four weeks prior to fly season. We manufacture a 2:1 Beef Mineral with Altosid that will supply your animals with this oral larvicide.

A good nutrition program is just as important during maintenance as it is when livestock are in a productive state. Don't let the turn out to pasture be a time of neglect and nutritional deficit. The spring move to maintenance should be a time of rebuilding and nutritional fulfillment – allowing stock to be ready to reach their full potential.

FEEDING FOR REPRODUCTIVE SUCCESS

As we head into winter, good preparation is everything. Assuming you have adequate forage supplies then our attention goes to nutrition and health concerns. In our part of the country, we will be out of grass and all of its benefits by December, most likely earlier. Without high quality grass, ruminant



livestock become totally dependent upon the herdsman's feeding skill. Nutritional supplementation of the winter forage supply becomes critical. We will be in a demanding winter environment and need to fulfill the demands of late gestation and lactation. Gone are the nice, simple days of summer, watching the cows graze and thrive without much effort on our part. Much of your winter forage (hay, silage) will likely be first cutting. Despite all of our efforts we are stuck with at least 50% of our forage being hay that we call (a) less than desirable quality (b) okay or (c) poor quality.

The annual reproduction of ruminants in winter and early spring in the Midwest can be demanding. Preventative health (vaccination programs), nutrition and stockmanship must be at a high level for successful winter and early spring production. A good vaccination program for cows will lead to success at parturition and during the early life of the calves.

Winter time nutrition is critical, as we are supplementing almost all of the needs of the cow due to the stage of production and the low quality of much of our forage.

Winter feeding for production is a double challenge of low nutritional quality of stored forages and feeding for the highest demanding production stages of late gestation and lactation. The fact that these production cycles coincide with low quality forage makes supplemental feeding critical for success. The probability of deficiencies of even a basic nutrient such as energy or

protein and certainly selenium, magnesium, calcium, Vitamin E, etc. is high! Critical feeding starts 6-8 weeks prior to parturition and continues through lactation. Without adequate energy, newborns will be small and weak, and stillborns and abortions will be at a higher level. Cows who are shorted on energy will lose weight, have low milk production, a shortened live span, and have a longer re-breeding interval. Protein will be needed to maximize milk production and for viability of newborns. Calcium, magnesium, and, to some extent, potassium play a big role in metabolic disorders which can be disastrous. The sudden onset of hypocalcaemia and hypomagnesia frequently seen in otherwise healthy animals are results of those deficiencies. Feeding these nutrients as a preventive measure is more successful than treatment options. Iodine is very important in reducing stillborns and preventing goiter. Low selenium and/or vitamin E results in white muscle disease in newborns, weakness, low birth weight & viability, stillborns, more dystocia, delayed breed back time, and lowered performance.

We can help you with programs that supplement important nutrients such as energy, protein, selenium, vitamin E, magnesium, iodine, etc. The feed business is really about the animal health business and we take that responsibility seriously. We are not just here to sell you feed; we want you to be successful and profitable. Good feeding programs in gestation and lactation can really make or break you.



CREEP FEEDING CALVES

It is important to get calves started on creep early. Exposure to creep feed has many benefits; rumen development, heavier weaning weights, and increased profits. A good calf creep is palatable, well-fortified, and has the correct energy and fiber balance.

BEEF CATTLE HERD PROGRAM

Young calves will not eat very much creep, however early consumption of even a small amount of feed is important. This early consumption aids in rumen development and sets calves up to consume more feed and gain more weight later on in the creep feeding period. A good way to get calves started is to place the creep close to the areas where cows and calves congregate. You will also get an earlier start if the first feed is a very palatable texturized grain mix. Our product 'Beef Calf Creep B – Texturized' works well as the feed to attract calves to the creep. After the calves are well started on feed you should switch to 14% Calf Creep Pellet.

Pelleted Calf Creep Feeds should be a 5/32" pellet and free of fines. Avoid calf creep feeds which are a blend of several kinds of pellets. These products can separate and often have fines which can cause bloat and off feed times. When 'the blended pellet' product separates you also see a decline in calf performance due to the ingredient separation. You will want a single size pellet which has all of the ingredients in that pellet and is a pellet free of fines.



BEEF COW WINTER FEEDING

When it comes to supplemental winter feeding of the cow herd ; price, quality, and simplicity are often the primary concerns of the producer. Many producers like to supplement the cows ration with a pellet. Some mills are catering to this business by blending processor produced soy hull and corn gluten pellets. These products are a blend of two very large pellets which are full of fines, lack nutritional balance and fortification, and suffer from ingredient separation which causes lowered performance and off feed times. The mills offering feeds like this have good intentions – they just lack our capabilities. We have the knowledge of the ingredients' nutritional value and the pellet mills to make a well fortified , fairly priced, uniform, nutritionally balanced pellet that you can supplement with.



Our 'Beef Cow Pellet' is available bagged, in bulk bags, and in bulk – picked up or delivered. Soy Hull and Commodity Pellet's are also available for feeding growing cattle and the cow herd. These are available straight or in a blend –bagged, bulk bags, and in bulk.

If you are mixing rations for the cow herd, we can help with forage sampling and ration balancing. Balancing rations prevents under and over feeding which affects cost and performance. No matter your forage- (silage, hay, crop residue), it is important to know its nutritional levels so that the herd's feed can be properly supplemented. Correctly balanced rations improve calf birth weight and vigor , eliminate deficiencies, address metabolic disorders, maintain cow body condition, increase cow longevity, and improve health.

VACCINATION PROGRAMS

A cost effective, comprehensive 'year around' herd health program need not be complicated or expensive. Vaccinate for the common and basic problems that nearly all herds have such as IBR and BVD. Each herd should vaccinate for the basics plus any additional problems which are specific to their situation. For example; a herd which has a big problem with PI3 would vaccinate for IBR, BVD, and PI3. Whereas another herd might be giving clostridia and leptovaccines.

VACCINES: TOXOID VS. ANTITOXIN

A toxoid is the common form of a vaccine which is given for long term immunity to disease. The toxoid form of a vaccine takes about two weeks to be effective, needs an annual booster, and gives long lasting immunity. By contrast an Antitoxin gives immediate immunity; but that immunity is short lived. TAT- tetanus antitoxin is a good example of this.

TAT is given right after injury or castration so calves are immediately protected against

getting tetanus. In summary : Anti-toxins are used to treat a disease; and toxoid's are used to prevent a disease.

HOW VACCINES WORK

When a vaccine is given to an animal its system creates anti-bodies. The antibodies are specific to the particular disease's) which the animal was vaccinated for. Toxoid vaccines take 7 to 14 days for antibody development to occur and thus give the animal immunity. Anti-toxin's give immediate protection as a result of their direct neutralization of the toxin created by the infecting organism.

VACCINATING COWS

Cows should be vaccinated with an abortion control vaccine, such as StayBred VL5, prior to breeding, to control leptospirosis and vibriosis. Five weeks prior to calving, the cows should receive Scourguard 4KC and One Shot Ultra to protect newborn calves against scours and clostridia. A good cow vaccination program improves colostrum, which contains antibodies newborn calves require to protect them against many diseases.

VACCINATING CALVES

We recommend calves receive Inforce 3 twice, once at birth and again at 8 weeks of age to control respiratory diseases. At 4 months of age the calves should receive PI/BVD vaccine, also know as Bovishield GOLD 5, and One Shot Ultra to control clostridia. One Shot Ultra targets M haemolytica, the number one calf killer. When used in conjunction with BoviShield GOLD 5, calves are protected against both viral and M. haemolytica bacterial infections that lead to pneumonia.



**For More Informative
Articles visit:
hunternutrition.com**

SAMPLE BEEF HERD HEALTH & FEEDING PROGRAM

COW HERD PROGRAM

Deworming: 2-3 times per year.

Vaccinations (Cows): Abortion control vaccine such as StayBredVL5 - prior to breeding to control leptospirosis. 5 weeks prior to calving. Scourguard 4KC and One Shot Ultra to protect newborn calves against scours and clostridia.

Cow Feeding Program

1. Year-round access to free choice Beef 2:1 Mineral (4 ounces daily)
2. Maintenance = pasture and hay only for open and early gestation period.
3. Gestation = last 6-8 weeks gestation; feeding good quality first cutting hay, plus: (2-6 lbs) Beef Cow Pellet, 34% Beef Supplement (plus grain), or Beef Commodity Pellet (plus grain)
4. Lactation: Supplement forage with either Beef Cow Pellet or a Farm Blended Grain Mix made with 34% Beef Supplement.

**Total Annual Cow Requirements
For Hunter Nutrition Products:**

Beef 2:1 Mineral (free choice) =
34% Beef supplement =

91 lbs.
_____ lbs.

CALF FEEDING PROGRAM

Vaccinations (Calves): At birth and again at 8 weeks old —Inforce3 to control respiratory diseases. At 4 months of age: PI/BVD vaccine or Bovishield GOLD 5 and One Shot Ultra to control clostridia. When using Bovishield and One Shot Ultra—calves will receive protection from bacterial infections and pneumonia.

Calf Feeding Program

1. Creep Feed = 14% Calf Creep Pellet B or use Beef Calf Creep with Bovetec (Texturized)
2. Grower = Pelleted Calf Feeds or Farm Blended Rations
13% Calf Grower Pellet or 34% Beef Supplement
3. Finisher: 34% Beef Supplement or 40% Beef Supplement or Feedlot Supplements

Sample 34% Beef Ration:

Corn (Grains)	1700
34% Beef Supplement	300
	2000 #

Sample 40% Beef Supplement

Corn (Grains)	1700
40% Beef Supplement	250
	2000 #

**Total Annual Calf Requirements
For Hunter Nutrition Products:**

Calf Creep Feed =
Beef Supplement =

_____ lbs.
_____ lbs.

HORSE FEEDS & SUPPLIES

- **Most companies make horse feeds based on them being cheaply priced. We make only highly digestible, highly fortified horse feeds.** - We expect that your horses will be healthier, live longer, and stay in better condition on less feed than on competitors brands. Our Horse Feeds are properly balanced for energy, fiber, and protein.
- **Our Texturized Horse Feeds Stay Fresh Longer.** - These are sweet feeds which feature a unique blend of liquid molasses and soybean oil which keeps feed fresh longer and reduces drying out of feed. Only top quality ingredients are used, such as heavy northern oats and low temperature dried corn.

- **Our Pelleted Horse Feeds are Clean, Palatable, and Dust Free.** - We make standard and custom bagged or bulk pellet formulations for all stages. Only the highest quality ingredients go into these energy balanced pelleted feeds.
- **Highly fortified** with vitamins and minerals, especially Vitamin A & E and Zinc, which improve hair and skin.
- **We do all our own feed formulations** and mixing in a modern facility. Our quality is so good that several other major feed companies contract us to make their horse feeds!
- **Biotin Added to all horse feeds** for hoof health, hoof strength, and foot function.

TEXTURIZED FEEDS

12% HORSE FEED

Our Most Popular Texturized Horse Feed! This is an oat based, texturized, sweet feed. It is an excellent feed for show and working horses, as well as some young horses. Contains oats, cracked corn, molasses, soybean oil, and a pelleted supplement.

#30101

14% SENIOR HORSE TEXTURIZED FEED

Texturized feed made especially for older horses. Clean dust free palatable source of digestible fiber, extra energy (fat) and high levels of nutrients. **Special Order**

#30103

PELLETED FEEDS

HORSE 1200

Our 12% protein pelleted horse feed is an excellent feed for show, mature pleasure horses and working horses. Our most popular pelleted horse feed fits many stages of a horses life. **Special Order**

#30110

HORSE 1400

Our 14% protein pelleted. Horse 1400 works well for show, training, breeding, working, and racing horses as well as younger horses who benefit from higher protein levels.

#30111

SENIOR HORSE PELLET

A 14% protein pellet made especially for the needs of senior horses.

#30104

PERFORMANCE HORSE PELLET

Pelleted feed with both high fat and high protein to provide energy for higher performing horses. This feed works well for showing, training, breeding, working, and racing horses as well as younger horses who benefit from higher protein. 14% Protein; 7.60% Fat.

#30104

36% HORSE SUPPLEMENT

A pelleted supplement for making all types of texturized and horse feed grain mixes. 36% Horse Supplement is designed and balanced just for horses. Used by both feedmills and farms to make horse feeds. 36% Horse is a source of Protein, Vitamins, Minerals, and Trace Elements. Mix 36% Horse with local grains.

#30108

DEWORMERS & HORSE HEALTH SUPPLIES

ANTHELICIDE EQUINE DEWORMER PASTE

Anthelcide is Oxibendazole 22.7%. The 26 gram tube treats up to a 1200 lb horse at the 10mg/kg dose rate and an 800# horse at the 15mg/kg dose rate. Effective against large strongyles, large roundworms, pinworms, and threadworms at the 10mg/kg dose rate. Use 15mg/kg to control small strongyles.

2099

(Ship wt. 0.50 lb.)

\$ 9.10

SAFEGUARD EQUINE DEWORMER PASTE

Safe-guard is Fenbendazole 10%. The 25 gram tube treats up to a 1100 lb horse at the 2.3 mg/kg dose rate and an 550 # horse at the 4.6 mg/kg dose rate. Effective against large strongyles, and pinworms at the 2.3 mg/kg dose rate. Use the 4.6 mg/kg dose rate to control ascarids.

2097

(Ship wt. 0.50 lb.)

\$ Call

IVERMAX EQUINE DEWORMER PASTE

Ivermax is Ivermectin 1.87%. The 6.08 gram tube treats up to a 1250 lb horse at the 91 mcg/lb. dose rate. Effective against large strongyles, small strongyles, hairworms, ascarids, roundworms, lungworms, bots, threadworms, and pinworms.

2098

(Ship wt. 0.50 lb.)

\$ 10.40



ZINPRO PRO CARE 4

Contains four trace minerals; zinc, manganese, copper and cobalt. The unique molecular structure of Zinpro Minerals makes them the most bioavailable trace minerals available. Feed one full scoop daily.

2111

2#

(Ship wt. 3 lbs.)

\$ 19.78



VETERICYN

Wound & infection treatment. Use to treat or prevent hot spots, rain rot, rashes, post surgical sites, burns, cinch fungus, ring worm, skin infections, scratches, eye infections, respiratory tract associated infections, skin ulcers, E.Coli, Salmonella, strep, and staph.

3017-8 (8 oz)

(Ship wt. 1 lb.)

\$ Call

3017-16 (16 oz)

(Ship wt. 2 lb.)

\$ Call



OATS

Our bagged whole oats are double cleaned, heavy oats. We add a bit of soybean oil to these as a further dust control measure. Packaged in sewn paper 50# bags these are a premium product.

DAIRY & MEAT GOAT FEEDS

Highly fortified feeds for superior performance, digestibility, palatability, and quality.

- **We have a line of feeds, premixes, and supplements formulated specifically for Goats.** Many producers mistakenly use dairy cattle feeds for goats, but the requirements of the two species are very different, consequently the goats do not receive the proper levels of vitamins and minerals, as well as not enough protein or energy. For example, dairy cattle feeds provide only 1/10th the levels of Vitamin E and Selenium required in a Dairy Goat ration.
- Rations provide all the correct required levels of vitamins, and minerals; and in fact, many of our formulations have **much higher levels for improved performance of the animal.** **Extra Phosphorus** is added for lactating animals and young stock. The levels of Iron and Zinc are higher for improved skin and hair condition, higher disease resistance, and reduced occurrences of anemia. **Our Selenium and Vitamin E levels are the highest in the industry;** proper levels reduce losses due to White Muscle Disease, reduce the incidence of retained placentas and breeding problems, and improve disease resistance. All of our Goat Feeds contain the correct copper level; our customers have never had a copper toxicity or deficiency while on our program.

FREE CHOICE MINERAL

GOAT MINERAL W/ DECCOX® + VITAMINS

Our own High Selenium, Free Choice Mineral formulated just for goats. Contains 27% Salt, 18% Calcium, 8% Phosphorus, Macro Minerals, Trace Minerals, Iodine, and Selenium. Each 3/4th's of an ounce of our goat mineral contains the maximum selenium level allowed by the FDA, at 0.70 mg. (Increased from 0.70 mg selenium/1 oz.) This level of Selenium is higher than competitor's. Our higher levels of zinc and iron are important for maintaining high growth rates, preventing anemia, and increasing resistance to disease. To prevent goiter and to aid in improvement of reproductive efficiency, Iodine is included. Zinc and Manganese levels are 1200 ppm each in all versions of Goat Mineral. Zinc plays a major role in an animal's health and in maintaining skin and hair coat. Zinc is also important in maintaining hoof health, strength, and function. Manganese is important to reproductive performance. Inadequate Manganese causes delayed estrus and reduced conception rates. Goat Mineral contains the proper level of added copper in addition to Vitamins. All versions of Goat Mineral contain Magnesium, Potassium, Sulfur, and Cobalt. Many competing products lack magnesium and potassium. Does typically consume 1/2 to 1 ounce of mineral per day, or approximately 17# per year, equaling a cost/doe/ year of \$8.16. No additional salt is needed. Contains decoquinat for the prevention and control of coccidiosis. Feed 30 days pre-kidding to does to avoid performance-reducing infections in the kids. One ounce/day provides 22.7 mg/100 lbs. of body weight of deccox.

(Contains added Copper—Do not feed this product to sheep.)

Calcium	18.00%	Selenium.....	33ppm
Phosphorous	8.30%	Vitamin A.....	66,000 IU/lb
Salt	27.0%	Vitamin D.....	3,600 IU/lb
Copper	250 ppm	Vitamin E.....	440 IU/lb
		+ Trace Minerals	

#20005 50# (Ship wt. 52 lbs.) \$ 38.32

Deccox® is a registered trademark of Alpharma Animal Health Inc.

GOAT MINERAL W/ VITAMINS

This is our un-medicated free choice mineral made just for goats. This mineral has the same specifications as Goat Mineral w/ Deccox + Vitamins. This is generally the mineral of choice for the Dairy Goat producers needing an un-medicated free choice mineral.

(Contains added Copper - Do not feed this product to sheep.)

#20007 50# (Ship wt. 52 lbs.) \$ 31.38

SURVIVE! FOR GOATS

Our oral Energy and Vitamin E Supplement for newborn kids, sick or weak adults, and ketotic does. Dose every kid at birth with 1 pump (4 ml) to supply: 415 IU Vit. E, 3,780 IU Vit. A, 940 IU Vit. D, and one of the highest levels of energy available. SURVIVE! is made with oil, instead of propylene glycol, to be gentler on a kid's stomach, and is also nutritionally superior.



#500109 1 pint (Ship Wt. 1.4 lbs.) \$ 22.00
#500109CS Case of 12 (Ship Wt. 15 lbs.) \$ 234.00

SUPPLEMENTS & PREMIXES

DAIRY GOAT 500 SUPPLEMENT

A pelleted supplement, very highly fortified with nutrients for the lactating dairy doe. Supplies high levels of Selenium, Vitamin E, and Phosphorous—very important to maximize milk production. Also contains yeast and bicarb in the pellet. This supplement is 39% protein, and is typically included at 500 pounds per ton in a lactation diet. **Special Order.**

Sample Lactation Rations:	w/ Mixed hay	w/ Alfalfa Hay
Grain	1500	1600
DG 500	500	400
	2000#	2000#
#502000 50#		(Ship wt. 52 lbs.)

40% GOAT SUPPLEMENT W/ DECCOX®

40 GOAT is a pelleted protein, vitamin, mineral, and deccox supplement designed especially for growing rations fed post-weaning. Use 40 Goat Supplement pellets with your own grain to farm-blend rations for grower/finisher goats and replacement stock. This high protein supplement will save you money; it only takes 400#/ton of our 40% to make a 15% protein feed. Our competitors usually sell 30-34% protein supplements which require 575-600 lbs/ton to make a 15% protein feed. 40 GOAT contains deccox; when you use 400# of supplement per ton you get a complete feed containing 27.2grams/ton of Deccox. 40 GOAT has higher vitamin/mineral levels and more digestible ingredients which will promote soundness, faster gains, greater feed utilization, and reduce health problems. 40 GOAT has extra calcium and ammonium chloride to prevent urinary calculi.

SAMPLE RATION :

	15% Ration
Grain (Corn, etc)	1600
40% Goat	400
	2000#

#501516 50# (Ship wt. 52 lbs.)

Deccox® is a registered trademark of Alpharma Animal Health Inc.



Congratulations to Phillip Gardner, who took Grand Champion Dairy Market Goat at the 2024 St. Joseph County, Indiana 4-H Fair.

DAIRY & MEAT GOAT FEEDS

SUPPLEMENTS

Boer Goat Gestation & Lactation Feeding Programs -

- Controls coccidiosis and toxoplasmosis.
- Reduces cocci infection in kids.
- High Vitamin E & Selenium eliminates 'weak' kids.
- Program provides correct protein, iodine, trace minerals, selenium, minerals, and vitamins.

Our highly fortified feeds for gestating and lactating meat-type doe's are available either as complete made up feeds or can be farm blended using our supplement. These feeds were designed specifically for meat—type goats and are very successful.

34R-240 SUPPLEMENT

A pelleted protein supplement containing Rumensin for prevention and control of coccidiosis and toxoplasmosis. Feed in late gestation (last 6 weeks) and in lactation. Feed 34R-240 at the rate of 1/4 lb. per doe/day to provide a high level (30 mg) of Rumensin. This will 'clean up' the doe so that she does not shed as much cocci at kidding, which lowers cocci infection in the goat kids! This 0.25 lb of 34R Supplement also provides very high Selenium (0.70 mg) and Vitamin E (50 IU/lb.). **For about 8 cents per day 34 R cleans up cocci, prevents white muscle disease, toxoplasmosis, & provides selenium, minerals, and vitamins.**

Sample rations:	Gestation	Gestation	Lactation	Lactation
Feeding Rate/Doe/Day	1.25#	1.50#	2.00#	2.50#
Grain	1600	1665	1750	1800
34R Supplement	400	335	250	200
	2000#	2000#	2000#	2000#

Above rations are based on daily feeding levels. Example: Gestation 1.5 is to be fed at 1.5 lbs per doe per day; in two feedings. Feed the above gestation grain mixes with a good first cutting hay 11-13% protein. Lactation rations should be fed with a good quality legume or grass/legume hay testing 16-20% protein.

#500104 50# bag (Ship wt. 52 lbs.)

Seasonal floor stock on Gestation 1.5R and Lactation 2.0R.

GOAT 1600 R PELLET

A complete 16% protein pelleted feed in a mini pellet (1/8") form. Clean, dust free pellet is very palatable and is made with highly digestible ingredients, no cheap fillers. Feed GOAT 1600 R as the sole source of grain to growing/finishing kids, show goats and any goat needing a 16% protein ration. Highly fortified ration contains 30 grams per ton of Rumensin for coccidiosis control. Also contains ammonium chloride for prevention of calculi.

#20006 50# (Ship wt. 52 lbs.)

'ALL NATURAL' 40% SUPPLEMENT

A non-medicated pelleted supplement for maintenance and gestation. A source of Protein, Vitamins, and Minerals. **Special Order**

#500003 50# (Ship wt. 52 lbs.)

KID MILK REPLACER

#2061 25# (Ship wt. 28 lbs.) \$ Call

COMPLETE FEEDS

16% GOAT RATION

Our complete, 16% protein, goat feed for kids, lactating, and show goats. A consistent and palatable blend. Balanced fiber and energy along with rumen buffers and yeast to reduce rumen upsets and off-feed times. Excellent complete feed for all goats- also adds bloom to show animals. Texturized sweet feed is made with cracked corn, oats, pelleted supplement, soy oil & molasses. This ration contains no medication and is popular for dairy goats.



#20001 50# (Ship wt. 52 lbs.)

17% GOAT GROWER W/ DECCOX®

This is a texturized feed made specifically for growing wether meat goats for show. This feed is palatable, consistent and highly fortified with vitamins and minerals. Special ingredients are added to aid in building muscle while maintaining proper fat cover in show meat goats. This texturized feed is made with cracked corn, oats, pelleted supplement, soy oil and molasses. Feed as the sole source of grain, along with about 0.33 pound of hay per head per day. Contains 27.2 grams/ton of deccox for control of coccidiosis. This ration really gets the results—controlling cocci, preventing calculi, preventing white muscle disease, and keeping goats healthy and doing good all year. **For Meat Goats topdress this feed with 4 oz. of TOPLINE (see page 9) per head/day to build muscle. Start topdressing with TOPLINE at least 60 days prior to showing.**

#20003 50# (Ship wt. 52 lbs.)

* Deccox® is a registered trademark of Alpharma Animal Health Inc.

18% KID STARTER 40 D

This texturized starter features a uniform particle size that other texturized starters lack. It is made with a pelleted supplement, cracked and rolled grains and liquid molasses. Kids really go after our texturized feed without the sorting problems as seen with competitors texturized feeds. Feed 'Texturized Kid Starter' as the sole starter feed. This starter is very highly fortified and contains a double level of deccox to control coccidiosis. Contains 40 grams per ton of deccox. Great starting feed for both dairy and meat type goats. **Special Order**

#20004 50# (Ship wt. 52 lbs.)

18% KID STARTER R (WITH RUMENSIN)

We have made custom Kid Starter's with rumensin since 1990. With the re-newed interest in Kid Starter Feeds containing rumensin, I formulated an updated 18% Kid Starter with high fat, probiotics, prebiotics, and high vitamin levels. 18% Kid Starter is a very palatable Texturized Feed that goat kids really bloom on. 18% Kid Starter R compares very well with the competition and has the advantage in terms of freshness and nutrient fortification. **Special Order**

#20004R 50# (Ship wt. 52 lbs.)

SAMPLE GOAT HERD HEALTH & FEEDING PROGRAM

DOE HERD PROGRAM

Health Program: Deworming 3-4 times per year. Typically first deworming at pasture turn-out. Then again 3 weeks later, (as needed mid-summer deworming for tapeworms), then last deworming prior to coming into the barns for the winter.

Vaccinations: Pre-breeding with abortion vaccines if needed.

Pre-kidding (3-4 weeks) CD/T vaccine (and Pneumonia vaccine if needed)

Doe Feeding Program

1. Year-round access to free choice 'mineral' (3/4 to 1 ounce daily)

2. Maintenance = pasture and hay only for open and early gestation period

3. Gestation—last 4 weeks; feeding good quality first cutting hay

Feed needed
per Doe/year

0.25 lbs. 34R-240 Supplement per day x 28 days = lbs. 34R-240 Supplement

7.00 lbs.

1.00 lbs. Corn (grains)/doe per day x 28 days = lbs. corn per doe in gestation

28.00 lbs.

3.50 lbs. Hay per day x 28 days = lbs. hay needed in gestation

98.00 lbs.

4. Lactation—8 weeks; feeding good quality legume or legume mixed hay

0.25 lbs. 34R-240 Supplement per day x 60 days = lbs. supplement in lactation

15.00 lbs.

2.00 lbs. Corn (grains)/doe per day x 60 days = lbs. corn per doe in lactation

120.00 lbs.

4.25 lbs. Hay (range 3.5 to 4.5 lbs.) x 60 days = lbs. hay needed in lactation

255.00 lbs.

**Total Annual Doe Requirements
For Hunter Nutrition Products:**

**Goat Mineral (free choice) = 22 lbs.
34-R Goat supplement = 22 lbs.**

KID FEEDING PROGRAM

Health Program: At birth —Survive! and their mother's colostrum

At docking/castrating — TAT vaccine (tetanus antitoxin)

At 4 to 6 weeks of age — 1st CD/T vaccine (overeating/tetanus)

At 8 to 10 weeks of age — 2nd CD/T vaccine and deworm

Kids might need 1-2 more dewormings

Kid Feeding Program

1. Birth to weaning (60 days) = Use 18% Kid Starter Feed w/Deccox (Texturized)

Feed needed
per Doe/year

18% Kid Starter Feed used per Kid to 60 days of age is 1 bag or

50 lbs.

2. Grower/Finisher Kid Rations 60 days to Market-Full fed farm blended ration

Feed needed from weaning to 125 pound market weight

Corn (grains) 1600
40% Goat Supplement 400
2000#

Corn (grains) used per kid (post weaning) in ration =

200 lbs.

40% Goat Supplement used per kid =

50 lbs.

**Total Annual Kid Requirements
For Hunter Nutrition Products:**

**Kid Starter Feed = 50 lbs.
40% Goat Supplement = 50 lbs.**

SWINE PREMIX

SWINE 55 PREMIX WITH AMINO ACIDS

A Premix For Grower-Finisher Pigs contains Lysine, Methionine, and Threonine

- Supports High Performance
- Improved Feed Conversion
- Makes Highly Fortified Rations Which Maximise The Pigs Genetic Potential
- Optimum Trace Mineral Levels
- Premix Corrects Cal/Phos. Levels
- Clean, Uniform, and Dust-Free
- Easy to Use; 1 Bag per Ton
- Added Amino Acids: Lysine, Methionine, and Threonine
- Organic Selenium Included

GUARANTEED ANALYSIS

Lysine	Min. 11.00%
Calcium (Ca)	Min. 16.61% Max. 20.61%
Phosphorus (P)	Min. 3.23%
Salt (NaCl)	Min. 13.48% Max. 15.48%
Selenium (Se)	Min. 10.0 ppm
Zinc (Zn)	Min. 2000 ppm

Feeding Directions: Feed to growing and finishing swine according to the rations listed below.

SAMPLE RATINGS

% Protein	16.0%	18.0%
Corn, coarse ground	1500	1400
48% Soybean meal	425	525
Swine 55 Premix	55	55
Soybean Oil	20	20
	2000#	2000#

#50107 55# (Ship wt. 58 lbs.) \$40.97

SOW 100 PREMIX

Contains phytase which can increase digestibility of phytin-bound phosphorus in swine diets.

- Supports High Milk Production
- Improved Re-Breeding Intervals
- High Phytase = Improved Phosphorous Utilization
- Improves Sow Longevity
- Optimum Trace Mineral Levels
- Premix Corrects Cal/Phos. Levels
- Clean, Uniform, and Dust-Free
- Easy to Use; 2 Bags per Ton
- Added Amino Acids: Lysine and Threonine
- Organic Selenium for Pig Survival

GUARANTEED ANALYSIS

Lysine	Min. 3.26%
Calcium (Ca)	Min. 15.61% Max. 18.72%
Phosphorus (P)	Min. 5.69%
Salt (NaCl)	Min. 9.00% Max. 10.80%
Selenium (Se)	Min. 6.0 ppm
Zinc (Zn)	Min. 2,200 ppm
Phytase	Min. 9,072 FTU/lb

Feeding Directions: Daily feeding rates for sows and gilts in gestation will depend on achieving individual body condition targets. Guidelines: Feed gestating sows 6-8 pounds of feed per a day. Feed lactating sows 8-15 pounds of feed per a day.

SAMPLE RATINGS

	Gestation		Lactation	
% Protein	12.5	14.1	15.7	17.0
Corn, coarse ground	1690	1605	1500	1440
48% Soybean meal	200	285	360	420
Sow Premix 100	100	100	100	100
Soybean Oil	10	10	40	40
	2000	2000#	2000#	2000#

#50101 50# (Ship wt. 53 lbs.) \$33.46

SHOW PIG FEEDS



SHOW PIG 18-120

"Nutritionally Superior Formula

Puts on Muscle, and Correct Finish!"

18% protein, 1.20 % Lysine! This is a very high lysine ration for show pigs. Best used as a full fed ration for young show pigs, then as a limit fed ration to pigs that need to have their weight held without losing muscle. This feed is balanced to provide for all the nutritional needs of the animal, and should be the sole source of feed for show pigs. Our customers tell us SHOW PIG 18-120 'held' their pigs - putting on muscle - not fat! **Pelleted + Meal Form.**

#50100 Pellets 50# (Ship wt. 52 lbs.)
#50102 Meal 50# (Ship wt. 52 lbs.)

Nearly all of our customers use SHOW PIG 18-120 from the time they get their pigs thru the show. They start the pigs out on full feed. At about 80-90% of show weight they begin limit feeding SHOW PIG 18-120 to about 5-6 lbs. Additionally they topdress 4-6 ounces of TOPLINE daily.

TOPLINE

See page 10 for more information. A pelleted show animal supplement that is fed in addition to the animals normal feed. Formulated for show lambs, calves, pigs, and goats; to aid in improving and maintaining firmness of muscling of the animals topline. The special protein sources, which include multiple bypass protein sources, allow TOPLINE to help maintain the 'tops' of animals that are being worked and/or having weight held for a show. Topline contains ingredients which aid in stimulating appetite, improving feed utilization, improving overall health and disease resistance, keeping animals fresh, healthy and on feed, and maintaining a normal rumen pH.

Price subject to ingredient cost fluctuations

#501508 50# bag (Ship wt. 52 lbs.) \$ 45.88
#501508B 30# bucket (Ship wt. 32 lbs.) \$ 39.30

PIG FEEDS

16% PIG GROWER (MEAL)

16% Pig Grower is a palatable, dust free meal type feed for growing and finishing pigs. This well fortified grower keeps pigs healthy and gaining quickly.

#50109 Meal 50# (Ship wt. 52 lbs.)

RABBIT & CAVY FEEDS

Consistent High Quality Feed that is fine-free!

- **Precise Formulations** – Nutrients are balanced at optimum levels. Proper nutrient levels are vital to improve performance, strengthen the immune system, increase feed utilization & bloom, and minimize anytime an animal may go off feed.
- **Pro-Biotics** – Lacto Sacc is added to our feeds to provide beneficial live bacteria to help improve digestive health, increase immune response, and keep animals eating!
- **Pre-Biotics** – Bio-Mos is an active yeast cell wall component to reduce the incident of salmonella, e.coli, and clostridia. Bio-Mos also helps digestion efficiency and increase immune response.
- **Lecithin** – helps with preventing hair balls.
- **Yucca (Micro Aid)** – helps control the unpleasant Ammonia Odors rabbits can produce.

17% RABBIT PELLETS

Our 17% protein pelleted rabbit feed is designed to be the sole ration fed to rabbits. It is formulated to maximize litter and milk production in does, improve feed efficiency, stimulate healthy skin and hair, and promote ideal growth and development of young rabbits. 17% Rabbit is good for show rabbits, adult rabbits, and growing rabbits.

#500001 50#

(Ship wt. 52 lbs.)

15% RABBIT PELLETS

Our 15% protein pelleted rabbit feed is designed to be the sole ration fed to rabbits. It is formulated for the maintenance of rabbits in a nonproductive stage, rabbits raised for meat, and the breeder who wants to feed a lower level protein. This ration works well for those rabbits needing a maintenance diet.

Special Order

#500002 50#

(Ship wt. 52 lbs.)

CAVY PELLETS

Our pelleted cavy ration is designed to be the sole ration fed to guinea pigs and hamsters. It is formulated to promote healthy skin and hair, improve overall health, and provide supplemental Vitamin C required by guinea pigs and hamsters.

Special Order

#500004 50#

(Ship wt. 52 lbs.)

Congratulations to Isabella Siddle, who took Reserve Grand Champion Single Fryer at the 2024 Muskingum County, Ohio Junior Fair Single Market Rabbit Show.



HAYSAVER



'A Pelleted Hay Replacer'

GUARANTEED ANALYSIS VS. NONE FOR HAY

CLEAN AND COVENIENT TO FEED

WEED AND MOLD FREE

TAKES US LESS SPACE THAN BALES OF HAY!

HAYSAVER

Hay Saver Pellet has the nutritional value of a second cutting hay and can replace up to 50 to 60% of the hay in an animals diet. The formulation is a combination of soy hulls, alfalfa meal, minerals, and soybean meal which makes Hay Saver Pellet a hay replacement. Feed Hay Saver Pellet in situations where you need to replace good quality hay and/or supplement poor quality hay. Hay Saver's protein is almost as high as alfalfa pellets, but Hay Saver is less costly. Your stock will still need some long stemmed hay, so do not exceed a 60% hay replacement rate when feeding Hay Saver Pellet. Producer's report that animals maintain or improve condition when Hay Saver is used, as compared to feeding just hay as the fiber/roughage source. Hay Saver Pellet has many advantages over baled hay. Hay Saver takes up 75% less space than baled hay and has zero waste. Hay Saver is weed and mold free and can be fed to horses and all livestock. Hay Saver also has the advantage of having a guaranteed analysis and consistent nutritional value. Producers like the cleanliness and convenience of Hay Saver Pellets.

#501509 50# bag or bulk

(Ship wt. 52 lbs. or bulk)

50# Hay Saver with its zero waste is equal to 60# of high quality hay and takes 1/4th the space of hay.

FEED ADDITIVES & INGREDIENTS

LACTO-SACC

Lacto-Sacc is a source of live viable microorganisms, enzymes, yeast, and beneficial bacteria. (Lactobacillus acidophilus and Enterococcus faecium.) Feeding probiotics such as Lacto Sacc has many benefits for livestock. Lacto-Sacc has very high counts of live bacteria, which leads to better results. Lacto-Sacc improves overall animal health and performance. Lacto-Sacc is a direct fed microbial which supports (gut health) intestinal microbial balance with its supply of 'good' bacteria. Reduced pathogens, more consistent performance, and improved health are achieved by feeding Lacto-Sacc. Use Lacto-Sacc at about 2# per ton of complete feed for grower-finisher rations and gestation-lactation feeding situations. Use 4# per ton for rabbits and young starting livestock.



#LACTOSACC 55# bag (Ship wt. 57 lbs.) \$ 199.00

BIO-MOS®

Bio-Mos® is a pre-biotic made up of beneficial yeast cell wall components. These components (mono-oligosaccharides) bind pathogens such as e-coli. Feeding Bio-Mos in late gestation and in starter feeds yields good results in reducing performance and health issues caused by e-coli. Bio-Mos maintains digestive function, improves nutrient absorption, reduces pathogens, and improves animal performance. Usually 2 lbs./ton.



#BIOMOS 55# bag (Ship wt. 57 lbs.) \$ 146.17

ENERGY BOOSTER

An excellent quality, palatable rumen by pass fat. This product is clean and readily consumed. Feed Cattle 1 to 2 lbs., ewes and doe's 1-2 ounces. Rumen By Pass Fat is far more effective than adding extra fat or soy oil to the diet. To achieve the increase in lactation performance and to reduce weight loss in lactation the fat source must by pass the rumen. Feedback from dairies is excellent. I have used rumen by pass fats on our 300 ewe flock. The products really help reduce the weight loss that you normally see in lactation. Controlling weight loss in lactating animals will reduce re-breeding interval, increase conception rates, and provide for longer more productive animal lives.



#ENERGYBOOSTER 50# bag (Ship wt. 52 lbs.) \$ Call

BGY 28

BGY28 provides fresh, all-natural brewers yeast for livestock feeds, and other applications in an economical, palatable, free-flowing form. BGY28 is an exceptional yeast product, offering superior value and performance over its competitors. BGY28 is made with all natural ingredients, is a natural ingredient binder, and is carefully produced from the highest quality ingredients. BGY28 is specially blended to enhance and preserve nutritional quality and effectiveness. **SEASONAL**



#BGY28 50# bag (Ship wt. 52 lbs.) \$ 33.00

SHOW BLOOM

ShowBloom is a natural, highly palatable nutritional supplement formulated to improve animal health and well-being. A balance of high-quality protein and vitamins helps animals reach full genetic potential in skin and coat quality, muscling, and hoof condition. ShowBloom is based on food-grade brewer's yeast, a natural digestive system prebiotic.



#SHOWBLOOM 50# bag (Ship wt. 52 lbs.) \$ 60.00

FAT PAK® 100

Fat Pak® 100 is a unique product containing 100% pure animal fat. It is a dust free, prilled, free flowing beadlet with outstanding handling properties. It is a very palatable source of concentrated energy.



#FATPAK100 50# bag (Ship wt. 52 lbs.) \$ Call

HAY ALTERNATIVES

SOY HULL PELLET

Soy hull pellets are pelleted soy hulls and are a high energy fiber source. They can replace hay and/or grain and often replace corn, oats, and cottonseed hulls.



Crude Protein (not less than).....	11.00%
Crude Fat (not less than).....1.50% (not more than)	2.50%
Crude Fiber (not less than).....31.00% (not more than)	35.00%

#1022 50# bag or bulk (Ship wt. 52 lbs.) \$ Call

ALFALFA PELLET

Alfalfa pellets are pelleted alfalfa meal and used to replace part of your long stem forage.

Crude Protein (not less than).....	16.00%
Crude Fat (not less than).....2.00% (not more than)	3.00%
Crude Fiber (not less than).....25.00% (not more than)	29.00%

#1023 50# bag or bulk (Ship wt. 52 lbs.) \$ Call

ROLLED ROASTED SOYBEANS

Roasted Soybeans are an excellent source of protein and fat. Roasted soybeans are very palatable, contain 36% Protein and 18% Fat. Add Roasted Beans whenever additional protein and energy are needed. Roasted soybeans have an excellent amino acid profile and they are high in rumen by-pass protein and by pass fat. If you replace 100 lbs. of corn in a lactation diet with 100 lbs. of beans you raise the protein by 1.50% and the fat by 0.80%.



#1043 \$ Call

ADDITIVES, INGREDIENTS & POULTRY FEED



LIQUID MOLASSES

Our own blended cane molasses with mold inhibitors conveniently packaged for use in the mill or on the farm. Use at the rate of 50-200 lbs./ton to increase palatability and control dust.

#1001-50	50# bucket (Ship wt. 52 lbs.)	\$ 26.50
#1001-600	600# barrel (Ship wt. 625 lbs.)	\$ 267.00
#1001-Box	50# box (Ship wt. 52 lbs.)	\$ 23.13
(Cannot ship UPS or Carrier)		

AUREOMYCIN® 50

(50 g Aureomycin/lb.)

Contains Chlortetracycline, which is effective against some bacteria which cause respiratory disease. Also used in late gestation rations to aid in the control of vibriosis abortion disease. **VFD Required**

#1011-50 50# bag (Ship wt. 52 lbs.) \$ Call

Aureomycin® is a registered trademark of Zoetis Animal Health Inc.



AUREOMYCIN® 4 GRAM CRUMBLES

Double strength crumbles are your best value. (Most sell the 2 gram product!). Aureo 4 g contains 4 grams of Chlortetracycline per lb. Feed 1 ounce per ewe daily the last 30 days of gestation. This aids in the control of abortion and stillborn losses due to abortion diseases. **VFD Required**

#1012 50# bag (Ship wt. 52 lbs.) \$ 17.75

Aureomycin® is a registered trademark of Zoetis Animal Health Inc.



BOVATEC® 3 PREMIX

Lasalocid for control of coccidiosis control. Use 10# of Bovatec 3 Premix per ton of feed to achieve a 30 g/ton level in the complete feed. Contains 3 grams bovathec per pound.

#1013-10 10# bag (Ship wt. 11 lbs.) \$ 15.65

#1013-50 50# bag (Ship wt. 52 lbs.) \$ 38.84

Bovatec® is a registered trademark of Zoetis Animal Health Inc.

RUMENSIN® 3 PREMIX

Monensin for the control of coccidiosis. Use 10# of Rumensin 3 per ton of feed to achieve a 30 g/ton level in the complete feed. Contains 3.0 grams rumensin per pound.

#1018 50# bag (Ship wt. 52 lbs.) \$ 35.82

Rumensin® is a registered trademark of Elanco Animal Health

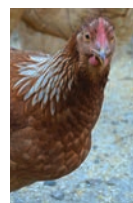
AMMONIUM CHLORIDE

Use 5 to 10 lbs./ ton of feed to aid in the prevention of urinary calculi.

#1015-5 5# bag (Ship wt. 6 lbs.) \$ 13.00

#1015-50 50# bag (Ship wt. 52 lbs.) \$ 79.00

POULTRY FEED



17% LAYER PELLET

A complete 17% protein layer feed for chickens. Clean, palatable pellet that laying and farm flock chickens really like.

#50103 50# bag (Ship wt. 52 lbs.)

* Also available as a meal type feed

21% CHICK STARTER

A 21% chick starter and grower crumble.

#50104 50# bag (Ship wt. 52 lbs.)

* Also available as a meal type feed

POULTRY BASEMIX 100

Provides protein, minerals, vitamins, and amino acids. Use 100 lbs. per ton to make layer and chick feeds.

#50112 50# Bag (Ship wt. 52 lbs.)



SOYBEAN OIL

Soybean oil is excellent for improving ration palatability, increasing energy and reducing dust. 20 lbs. of soy oil will control dust as well as 100 lbs of molasses. Soy oil is 100% fat, and therefore an excellent source of energy, (every 1 lb. of oil has as much energy as 3 lbs. of corn). Use soy oil at about 20 lbs. per ton for dust control. Levels of 30-60 lbs. per ton would significantly increase the energy levels of the diet. (Subject to market price changes.)

#1002-40 40# bucket (Ship wt. 42 lbs.) \$ 49.40

#1002-Box 40# box (Ship wt. 42 lbs.) (Cannot ship UPS or Carrier)

#1002-425 425# barrel (Ship wt. 450 lbs.) \$ 475.58



AS® 700 CRUMBLES

2 g of Aureomycin and 2 g of Sulfa per pound. Use about 50 lbs. per ton in the feed to control respiratory diseases. To treat by topdressing feed 1 oz./head/day. **VFD Required**

#1003 50# bag (Ship wt. 52 lbs.) \$ 37.00

Aureo S 700® is a registered trademark of Zoetis.

VITAMIN E 20,000

Contains 20,000 IU Vitamin E per pound. Every 1 pound added per ton will increase Vitamin E in the complete feed by 10 IU/lb.

#1006-1 \$ per pound (Ship wt. __ lbs.) \$ 2.94

#1006-2 2# bag (Ship wt. 3 lbs.) \$ 8.52

#1006-50 50# bag (Ship wt. 52 lbs.) \$ 80.08

DECCOX® 10

Deccox 10 contains 0.60% or 2.72 grams per lb decoquinate, used to prevent and treat coccidiosis. Deccox 10 is one-tenth the concentration of 6% Deccox. Deccox 10 aids in eliminating the mixing errors associated with concentrated 6% Deccox.

Instructions For Use

Pounds of Deccox 10 Per ton Complete Feed	Grams/ton of Deccox (% level Deccox)
5 lbs	13.6 g (.0015%)
10 lbs	27.2 g (.0030%)
12.5 lbs	34.0 g (.00375%)
15 lbs	40.8 g (.0045%)

Deccox® is a registered trademark of Zoetis Animal Health Inc.

Feed complete feeds at a rate which will provide 22.7 mg/100 lbs of body weight

#1016-50 50# bag (Ship wt. 52 lbs.) \$ 78.28

#1016-10 10# bag (Ship wt. 11 lbs.) \$ 23.45

DECCOX® 6%

(6% Decoquinate or 27.2 grams per lb.)

Deccox is approved for use in both sheep and goats for the treatment and prevention of coccidiosis. 1lb./ton=27.2gr/ton of feed. **We recommend you use Deccox 10 instead of Deccox 6%.**

#1007-50 50# bag (Ship wt. 52 lbs.) \$ 661.80

#1007-2 2# bag (Ship wt. 3 lbs.) \$ 33.79

Deccox® is a registered trademark of Zoetis Animal Health Inc.



SURVIVE!

VITAMIN E & ENERGY ORAL DOSER



- SAVES NEWBORN LAMBS
- FAST ACTING ENERGY SOURCE
- HIGHEST VITAMIN E LEVEL OF ANY ORAL DOSER
- PREVENTS VIT. E DEFICIENCIES
- TREATS KETOTIC EWES
- GETS COLD, WEAK LAMBS GOING

SURVIVE! is HUNTER NUTRITION's own Vitamin E and Energy doser. SURVIVE! often saves lambs that would have otherwise been lost due to chilling, weakness, or white muscle disease. SURVIVE! provides more Vit. E than any other oral doser (417 IU/4 ml dose).

SURVIVE! is easy for lambs and older sheep to digest and is more palatable. SURVIVE! is made with a readily absorbed energy source, is palatable, and contains high levels of Vit. A & Vit. D. Dose every lamb at birth for about 13 cents. SURVIVE! is made with soy oil, instead of propylene glycol, so it is more nutritional and also gentler on the lambs stomach.

PRODUCT COMPARISON

	<u>SURVIVE!</u>	<u>COMPETITOR A</u>	<u>COMPETITOR B</u>
Fat %	98.0	---	99.5
Vit. A (IU/oz.)	28,125	23,700	5,670
Vit. D3 (IU/oz.)	6,875	5,900	570
Vit. E (IU/oz.)	3,128	95	3,000
Vit. E (IU/4 ml dose)*	417	13	400
Retail \$ (16 oz. bottle)	\$18.00	\$17-20	\$18.00

*The levels of Vit. E in a product are the most important to a baby lamb.

#500118 1pt. (120 doses)	(Ship Wt. 1.4 lbs.)	\$20.00
#500118CS case (12 Bottles in each case)	(Ship wt. 14 lbs.) (\$19.00 each)	\$228.00

GUARANTEED ANALYSIS

Crude Fat (minimum)	98.0%
Vitamin A (minimum)	450,000 IU/lb.
Vitamin D3 (minimum)	110,000 IU/lb.
Vitamin E (minimum)	50,040 IU/lb.

INGREDIENTS

Vegetable Oil, Vitamin A Supplement, Vitamin D3 Supplement, Vitamin E Supplement, and Artificial Flavoring.

DIRECTIONS FOR USE

The dispensing pump provided with this product dispenses 4 cc (ml) per dose. For best results dispense product on the back of the tongue. Dispense product slowly to prevent choking and minimize waste.

ORAL USE ONLY – 1 PUMP OF DISPENSER IS 4 cc

EACH 4 cc (ml) DOSE CONTAINS THE FOLLOWING: 3750 IU Vitamin A, 917 IU Vitamin D, and 417 IU Vitamin E.

WHEN TO USE SURVIVE !

LAMBS AT BIRTH – Give most lambs 1 pump (4 cc) orally. Larger lambs give 6 cc. Dose all lambs at birth to reduce the incident of white muscle disease in lambs.

WEAK, COLD, & STRESSED LAMBS – Lambs that are being grafted, raised artificially, are on a poor milking ewe and those which are cold and/or weak all benefit greatly from the energy provided by SURVIVE!. Orally dose lambs with 4-8 cc every 12 hours until they are better.

BOOSTER DOSE – If Vitamin E deficiency has been a problem in the flock in the past or if ewes are on feeds low in Vitamin E, give lambs a booster at 3-4 weeks of age. Orally dose with 4 to 8 cc of SURVIVE !.

WEAK, KETOTIC EWES – Orally dose with 1 to 2 ounces of SURVIVE ! as a source of readily available energy.

CLUB LAMBS – For added bloom and energy, top-dress feed or orally dose 2 cc each day. For one-time treatments, orally dose 1 ounce.

TUBE FEEDING USE – Use 4 to 8 cc each time you tube lambs with milk and colostrum. Really helps 'bring around' those slow lambs that may not be nursing yet.

MILK REPLACER & SUPPLIES

CL EWE REPLACER

Colostrum Supplement

Feed to lambs which have not received enough colostrum. Feed for 1-2 days and then switch to regular lamb milk replacer. 50 grams per feeding.



#2003-50	50 g	(Ship wt. .5 lb.)	\$ 10.88
#2003-250	250 g	(Ship wt. 1.0 lb.)	\$ 20.88
#2003-700	700 g	(Ship wt. 2.5 lbs.)	\$ 48.92

LAMB MILK REPLACER

Guaranteed Analysis:

Crude protein, not less than .24.00%
Crude Fat, not less than30.00%
Crude Fiber, not more than.....0.10%
Ash, not more than5.00%
Lactose, not more than.....25%
Moisture, not more than.....6.00%
Vitamin A, not less than .30,000 IU/lb
Vitamin D3, not less than 10,000 IU/lb
Vitamin E, not less than20 IU/lb
Selenium, not more than.....0.1 ppm



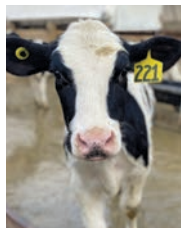
Price subject to ingredient cost fluctuations.

#2004-25	25# bag	(Ship wt. 28 lbs.)	\$ 48.00
----------	---------	--------------------	----------

CALF MILK REPLACER

Guaranteed Analysis:

Crude Protein, Min..... 22.00%
Crude Fat, Min..... 20.00%
Crude Fiber, Max..... 0.15%
Calcium, Min..... 0.75%
Calcium, Max..... 1.25%
Phosphorus, Min..... 0.70%
Vitamin A, Min..... 35,000 IU/lb
Vitamin D3, Min..... 7,500 IU/lb
Vitamin E, Min..... 150 IU/lb



Price subject to ingredient cost fluctuations.

Call for volume pricing.

#3045	50#	(Ship wt. 52 lbs.)	\$ Call
-------	-----	--------------------	---------

CALF ELECTROLYTE PACK

Made by Merrick's, it is a source of live, viable, naturally occurring micro-organisms. Use for treatment of stressed and sick/scouring calves. Treat up to four days. **Special Order**



#2060	5# pail	(Ship wt. 6 lb.)	\$ 38.00
Also available in 100# drum			\$ Call

CL COW REPLACER

CL Cow Replacer should be used on newborns who receive an inadequate supply of colostrum. CL Cow Replacer is a complete nutrition and lactobacillus replacement. CL Cow Replacer is all milk protein, pH adjusted to allow a more natural intestinal compatibility.



#2070	250 g.	(Ship wt. 1.0 lb.)	\$ 18.60
-------	--------	--------------------	----------

'LAMB SAVER' TUBE & SYRINGE

60 cc and 140 cc syringe with feeding tube for orphans or weak lambs. Prevents fluid from entering the airways, which often happens with bottle fed lambs that are unable to swallow.

#2005-60	60 cc	(Ship wt. 0.5 lb.)	\$ 4.29
#2005-140	140 cc	(Ship wt. 0.5 lb.)	\$ 8.45



LAMB PULLER

Plastic, easily sterilized instrument to aid in lambing



#2088 Puller	(Ship wt. 1.0 lb.)	\$ 19.00
#2117 Rope	(Ship wt. 1.0 lb.)	\$ 13.14

O.B. SLEEVES

Disposable, long obstetrical sleeves, for assisting a ewe at lambing. Pkg. 100



#2006 Clear Sleeves	(Ship wt. 0.5 lb.)	\$ 17.51
#2028 Maxi Sleeve (tan)	(Ship wt. 0.5 lb.)	\$ 28.13
#3051 Breeder Sleeve	(Ship wt. 0.5 lb.)	\$ 18.10

U-BOND

A Masking agent that aids in establishing a maternal bond between lambs, kids, calves, or foals and their new mothers. This spray will replace the newborns original scent allowing the newborn and mother to effectively establish a maternal bond.



#2116	250ml	(Ship wt. 1.0 lb.)	\$12.30
-------	-------	--------------------	---------

PRITCHARD NIPPLES

Specially designed nipple for bottle-feeding lambs. Shaped like a ewe's teat, with a flutter valve, eliminating lambs filling up with air and bottles collapsing. Fits non-returnable pop bottles.



#2007	(Ship wt. 1 oz.)	\$ 2.25
-------	------------------	---------

BEARIN PROLAPSE HARNESS

The BEARIN Prolapse Harness can be used alone or together with the Retainer Spoon to insure the vagina/uterus remains in place. It can be used for prolapse of the vagina and the uterus. Correctly fitted, it will not hinder bowel movement or lambing but will exert pressure on the key points to reduce straining and reduce pain. The straining pulls the harness tighter against the vulva and the ewe usually stops straining.



#2008	(Ship wt. 2.0 lbs.)	\$ 34.00
-------	---------------------	----------

EW E SPOON PROLASPE RETAINER

Holds a vaginal prolapse until ewe can give birth. Fits any breed of sheep. Package of four.

#2159	(Ship wt. 1.0 lb.)	\$ 9.00
-------	--------------------	---------

LAMBING LUBE

Non-irritating, antiseptic, obstetrical lubricant. Makes assisting a lambing ewe much easier and safer.

#2009-8 'Flask'	8 ounce	(Ship wt. 1.0 lb.)	\$ 5.00
-----------------	---------	--------------------	---------



PROPYLENE GLYCOL

For the treatment of ketosis in ewes. **Dosage:** Oral drench 48 oz./100 lbs. of body weight twice daily.

#2023	1 gallon	(Ship wt. 10 lbs.)	\$ 29.72
-------	----------	--------------------	----------



ELASTRATOR & RINGS

For tail docking and castrating. Instrument stretches rubber ring which contracts, restricting blood circulation, causing parts to atrophy.

#2011	(Ship wt. 3 lbs.)	\$ 14.00
#2012 100 rings	(Ship wt. 0.5 lb.)	\$ 3.48



GENTLE IODINE WOUND SPRAY

1% iodine spray for wound treatment and navels.

#2031	(Ship wt. 1.4 lbs.)	\$ 6.60
-------	---------------------	---------



TRIODINE 7

Used as a navel dip and wound treatment.

#2010-16	1 Pint	(Ship wt. 1.4 lb.)	\$ 19.77
----------	--------	--------------------	----------

Gallon of Triodine 7			
#2010-128	1 gallon	(Ship wt. 9 lbs.)	\$ Call



MEASURING BOTTLE

Handy 16 oz. pint bottle. Can use to bottle feed lambs by adding a Pritchard nipple. Also useful for measuring liquids. It has ml, ounces, cup, and dilution rate measurements. Cap included.

#2050	bottle	(Ship wt. 0.5 lb.)	\$ 4.20
-------	--------	--------------------	---------



**PRICES SUBJECT TO
CHANGE WITHOUT NOTICE.**

INJECTABLES, INSTRUMENTS, & SUPPLIES

MONOJECT SYRINGES

Top quality, sterile, disposable – made of nontoxic polypropylene plastic. Luerlock.



#2018-3	3cc	(Ship wt. 1 oz.)	\$ 0.27
#2018-3 Box of 100	3cc	(Ship wt. 2 lbs.)	\$ 23.22
#2018-6	6cc	(Ship wt. 1 oz.)	\$ 0.34
#2018-6 Box of 50	6cc	(Ship wt. 2 lbs.)	\$ 14.38
#2018-12	12cc	(Ship wt. 1 oz.)	\$ 0.48
#2018-12 Box of 80	12cc	(Ship wt. 2 lbs.)	\$ 35.18

MONOJECT 3ML SYRINGE with 20 gauge needle, Luer-Slip

#2113-3	3cc	(Ship wt. 1 oz.)	\$ 0.27
#2113-3 Box of 100	3cc	(Ship wt. 3 lbs.)	\$ 23.22

MONOJECT 12ML SYRINGE with 18 gauge needle, Luer-Lock

#2114-12	12cc	(Ship wt. 1 oz.)	\$ 0.72
#2114-12 Box of 100	12cc	(Ship wt. 4 lbs.)	\$ 43.94

MONOJECT NEEDLES

Sterile, disposable or reusable needles. Top quality aluminum hub needles.

#2019-18	18x1	(Ship wt 0.5 oz.)	\$ 0.22
#2019-18 Box of 100	18x1	(Ship wt 1.0 lb.)	\$ 22.01
#2019-20	20x1	(Ship wt 0.5 oz.)	\$ 0.22
#2019-20 Box of 100	20x1	(Ship wt 1.0 lb.)	\$ 19.64

ORAL DOSING SYRINGE-PLASTIC

Oral dosing syringe that can be used in small flocks where a drenching gun is not economical. Monoject, sterile syringes.

#2020-60	60cc	(Ship wt. 0.5 lb.)	\$ 2.00
#2020-140	140cc	(Ship wt. 0.5 lb.)	\$ 6.25



DURATEK SYRINGE

Durable, long lasting, economical oral dosing syringe. Easy and safe to use. Syringes have an adjustable dose.

#3022-20	20cc syringe	(Ship wt. 2 lb.)	\$ 14.60
#3022-30	30cc syringe	(Ship wt. 2 lb.)	\$ 15.39
#3022-50	50cc syringe	(Ship wt. 2 lb.)	\$ 15.73



REUSABLE SYRINGE W/ NEEDLE AND DRENCH FITTINGS

High quality New Zealand product! The same syringe can be used for both injection and drench by just simply changing the tips. Perfect for the small flock owner that does not want to buy both a dosing syringe and a syringe for injections.

#3031-20	20ml	(Ship wt. 0.21 lbs)	\$ 18.43
#3031-50	50ml	(Ship wt. 0.25 lbs)	\$ 18.43



THERABLOAT

Contains poloxalene for treatment of bloat. Very Effective.

Dose: 1oz sheep, and 2oz for cattle.

#2051	2 oz.	(Ship wt. 0.5 lb.)	\$ 15.28
-------	-------	--------------------	----------



CORID 9.6% ORAL SOLUTION (GENERIC)

Aids in the treatment and prevention of coccidiosis.

21 Day Prevention: (5mg per 2.2 lb body weight) 1 gallon to 1,600 gallons of water. **5 Day Prevention:** (10mg per 2.2 lb body weight) 1 gallon to 800 gallons of water.

As a Drench: Dilute 3 fl oz with one pint of water and give 1 fl oz of this solution for each 100 lb body weight.

#2029-10	powder	(Ship wt. 0.5 lbs.)	\$ 16.75
#2029-16	pint	(Ship wt. 2 lbs.)	\$ 22.09
#2029-128	1 gallon	(Ship wt. 9 lbs.)	\$ 52.07



VIT B COMPLEX INJECTABLE

For prevention and treatment of Vitamin B deficiencies. **Dosage:** Administer 10–20 ml; IM or SQ once or twice weekly as directed by a veterinarian.

#2025-100	100 ml	(Ship wt. 0.5 lb.)	\$ 10.22
#2025-250	250 ml	(Ship wt. 1.0 lb.)	\$ 16.63



PRODGEY AUTO DRENCH GUN

Prodgey 20 cc Automatic Drencher, with backpack. Adjustable dosage 1 to 20 cc. Top quality outfit, should last many years.



#3006	(Ship wt. 3 lbs.)	\$ 129.83
-------	-------------------	-----------

KAOLIN PECTIN

Kaolin pectin suspension used to treat diarrhea.

Dosages: Sheep 3–4 oz. Cattle & Horses 6–10 oz.

#2069	1 gal.	(Ship wt. 9 lbs.)	\$ 9.98
-------	--------	-------------------	---------



ORAL CAL MPK

For use as a supplemental nutritive source of calcium, phosphorus, magnesium, potassium and dextrose. Administer orally as a drench. 500 ml Adult Cattle; 50-80 ml. Sheep. Treat twice a day or until the animal is better.

#2108	(Ship wt 2 lb.)	\$ 12.13
-------	-----------------	----------



ORAL CPMK GEL 300 GM TUBE

Treats 'milk fever' and hypocalcaemia which occur near calving/lambing time. Contains calcium, magnesium, phosphorous, and potassium. 50 ml per ewe. Gel tube.

#2072	tube	(Ship wt 1 lb.)	\$ 8.18
-------	------	-----------------	---------



ORAL KETO-GEL 300 ML TUBE

Propylene glycol, & vitamins treats ketosis. 50 ml per ewe.

#2073	tube	(Ship wt. 1 lb.)	\$ 8.86
-------	------	------------------	---------



ANIMAL HEALTH & SHEEP SUPPLIES

DELICE-POUR ON INSECTICIDE

- + Controls Flies and Mosquitoes
- + Keds and Lice on Sheep
- + Ready to use—No dilution necessary.
- + Safe for lactating and non-lactating animals.
- + Synergized formula



Directions: Pour along back. Cattle=1/2 oz. per 100 lb. bodyweight. Max 5 oz. Sheep=1/4 oz per 50 lb. body weight. Applicator available. Max 3 oz. Use just after shearing!

#2021 1.32 gallon (Ship wt. 9 lbs.) \$ 54.09

GEL GUN

Gun to dispense gel tubes.

#2082 (Ship wt. 2 lbs.) \$ Call

MINERAL OIL

Mineral oil in economical gallon jugs. Use as an aid in treating bloat or as a mild laxative.

2071 1 gallon \$ 23.97
(Ship wt. 9 lbs.)



UDDERLY EZ SHEEP MILKER KIT

NEW! The UEZ Sheep Milker is invaluable to collect colostrum, milk, or treat mastitis in commercial as well as small breeding operations.

Box includes: (1) Udderly EZ pump, (2) #2 extraction cylinders, (2) silicone inflation inserts (small & medium), (2) 8 ounce colostrum/milk collection bottles with caps, bottle nipple, udder wipes, 1 pint bottle milk/colostrum collection bottles with caps, operation manual and DVD, microfibre dairy towel.

#3060 (Ship wt. 2 lbs.) \$ 189.95



EAZI-BREED CIDR SHEEP INSERT

CIDR's contain natural hormone progesterone 0.3 gram per insert. CIDR's are used to induce estrus in ewes (sheep) during seasonal anestrus.

Dosage and Administration: Insert one CIDR per ewe for 5 days. At the time of CIDR removal inject each ewe with 5 ml PG 600. Estrus will then occur in 1-3 days after removal. Use CIDR's with the Insert Applicator. CIDR's can be used to induce estrus and group lambing dates closer together.

#2075 Pkg of 20 Inserts (Ship wt. 0.50 lb.) \$ 166.78

#3058 CIDR G Insert Pkg 20 (Ship wt. 0.50 lb.) \$ 109.00

#2076 Applicator (Ship wt. 0.50 lb.) \$ 8.82



PG 600

PG 600 contains PMSG and hCG gonadotrophins which have been proven to promote the development of a fertile estrus cycle. Administer 5 ml(cc) Sub Q.

#2078 5 dose vial, 25 ml vial (Ship wt. 0.50 lb.) \$ 52.93



SI-RO MARK BRANDING PAINT

Made in Australia SI-RO MARK is the only sheep marking fluid approved as properly scourable by all of the world's leading wool processors. This top quality product is our choice for paint branding. Having tried Ecto-Mark; which tended to drip and run excessively we were pleased to be able to offer SI-RO. Available in several colors; red, blue, green, purple, and orange. Color's in stock may vary. **Available seasonally.**

#2055 1.06 gallon (Ship wt. 10 lbs.) \$ 42.18



MATINGMARK RAM HARNESS

Easy to use, quick to put on harness. Nylon crossover strapping holds harness firmly in place and is twice as wide as others. Heavy duty clips adjust easily. This is a long-life comfortable harness.

#2093 (Ship wt. 2 lbs.) \$ 30.00



MATINGMARK CRAYONS

Quick change crayons simply click-in place; no tools, no pins. Can be used on other types of harnesses. Available in yellow, orange, red, green, blue and purple. Cold 36°-68° F. Mild 50°-86° F. Hot 70°-106° F.

#2094 (Ship wt. 1 lb.) \$ 5.75/each

Box of 10, same color, temperature \$ 5.50/each



CEEMARK

Extra large marker. Blue, red, green, fluorescent orange, fluorescent pink, & fluorescent green.

#2095 (Ship wt. 1 lb.) \$ 2.65



RAM HARNESS

- Heavy-duty nylon, with anti-chafe pad and new snap buckles, will not slip and make it easier to adjust.
- Top quality leather.
- Adjustable for larger rams

#2086 Cotton/Padded (Ship wt. 1 lb.) \$ 46.77

#2035 Leather (Currently not available)



PRICES SUBJECT TO CHANGE WITHOUT NOTICE.

ANIMAL HEALTH

BLOOD STOP POWDER

Hemostatic powder for topical application. Controls bleeding.

#2062 16 oz.
(Ship wt. 1.4 lbs.) \$ 8.08



PROBIOTIC 512 TITGER PASTE

Replaces ruminant lactobacillus gel

A source of live, naturally occurring micro-organisms. Probiotic 512 Titger Paste is a combination of biological components that have a symbiotic relationship with the gut microflora. Product designed to work on all ruminants. Dosage: Calves at birth - 5 g; Recovering Cattle - 7.5 g; Cows at freshening - 15 g; Sheep, Goats, Deer at birth - 3 g; Mature Animals - 5 g.

#2105 (Ship wt. 1 lb.) \$ 9.10

CHLORHEXIDINE 2% SOLUTION

Use Chlorhexidine as a disinfectant for premises, supplies, surgical instruments, and equipment. It can also be used to treat cuts and abrasions. Chlorhexidine is a chemical antiseptic and is effective against bacteria and other micro-organisms on the skin. Use 1 ounce (2 tablespoons) per gallon of water.

#2022-16 oz. pint (Ship wt. 1.4 lbs.) \$ 5.69
#2022-128 oz. gallon (Ship wt. 9 lbs.) \$ 20.43



VETERICYN

Ophthalmic Gel eye repair lubricant. Reduces pink eye, eye and lid inflammation, and corneal abrasions / irritations.

#3057 (Ship wt. 0.5 lbs.) \$ 19.96



ULTRA SHIELD FLY SPRAY

Excellent and safe residual insecticide and repellent. Works on all livestock, show animals and horses. Repels flies, mosquitoes, and gnats for 3-5 days; also contains a grooming aid and coat conditioner. Active ingredients are permethrin and pyrethrins. Pleasantly scented.

#2085 32 oz. bottle (Ship wt. 2.0 lbs.) \$ 23.51



CATRON IV

A screwworm and ear tick spray that controls insect pests on beef cattle, dairy cattle, sheep, goats, hogs and horses. For use on wounds to kill and repel flies and fly maggots. Active ingredient is Permethrin 0.50%

#2087 10 oz. can (Ship wt. 1.0 lbs.) \$ 12.36



RAIDEX SPRAY STOCK MARKER

A fully scourable 400 ml spray stock marker. Dries quickly and resists fading. Available in red, blue, green, yellow and purple

#2096 (Ship wt. 1.4 lbs.) \$ 11.16



LD-44Z DAIRY & LIVE-STOCK INSECT KILLER

Replaces CV-ECO Flying Insect Killer

Kills various flying insects, crawling insects, bed bugs and fleas. Use as a treatment directly on animal or in livestock facility.

#2090 (Ship wt. 2.4 lbs.) \$ 22.56



TOPICAL FUNGICIDE SPRAY

A topical spray containing benzalkonium chloride. For use in the control of ringworm, show lamb fungus, and fungal problems. 32 oz. spray bottle.

#2077 32 oz. (Ship wt. 2.0 lbs.) \$ 14.82



SYNERGIZE DISINFECTANT

A broad spectrum disinfectant which is effective against gram - / gram + bacteria, ecoli, staph, streph, bacteria, viruses, and salmonella. This is a more concentrated and effective product than most on the market. Can also use in a boot wash.

#2107 1 gallon (Ship wt. 9.0 lbs.) \$ 40.70



MICRO B-12 12X

Oral paste. Source of Vitamin 8-12. Micro 8-12 12X contains 12,000 micrograms of Vitamin 8-12. Vitamin 8-12 is essential for these normal functions in animals; growth, health, feed efficiency and reproduction, formation of red blood cells, nervous system functions, hair growth, carbohydrate and fat metabolism. 34 gram tube does 1000# b.w.

#2106 (Ship wt. 1.0 lbs.) \$ 7.27



FOOTROT TREATMENTS

SERRATED HOOF TRIMMERS

Serrated to get through extra hard hooves with minimal effort and slippage.

#2015 (Ship wt. 2 lbs.) \$ 28.34



BURDIZZO TYPE HOOF TRIMMERS

Burdizzo style hoof trimmer with one serrated edge. Nice size, easy to use.

#3021 (Ship wt. 2 lbs.) \$ 24.64



SHEAR MAGIC HOOF TRIMMERS

Lightweight, easy action, very sharp for easy cutting. Small size makes for easier handling.

#2016 (Ship wt. 2 lbs.) \$ 24.83



ARS HOOF TRIMMERS

Ideal for trimming hooves of sheep and goats. This industry standard trimmer offers rust resistant, razor sharp, hard-chrome plated blades with a non-slip handle.

RED
#3055 LV140DX (Ship wt. 2 lbs.) \$ 34.80

WHITE
#3056 LV140LDX (Ship wt. 2 lbs.) \$ 46.08

ZINC SULFATE

For use in footbaths to prevent and control footrot in sheep. Mix 8 lbs zinc sulfate, 1 cup of laundry soap, and 10 gal of water to make a footbath solution. Sheep should have their feet trimmed, and then stand in this solution for at least 20 minutes.

#2017 50# bag (Ship wt. 52 lbs.) \$ 57.20
* CALL FOR VOLUME PRICING



KOPERTOX

Topical treatment for footrot and thrush. Contains copper naphthenate. 16 oz.

#2058 1 pint
(Ship wt. 1.4 lbs.) \$ 30.29



DEWORMERS AND SUPPLIES

PRIVERMECTIN SHEEP DRENCH

(Generic Ivomec)

Ivermectin 0.08% in a generic form. Ready to use, oral drench for removal and control of: Roundworms, nasal bots, and lungworms. 7 day withdrawal. (Safe for pregnant ewes.)

Dosage: 3.0 ml/26 lbs of body wt.

#2081-240 240 ml (Ship wt. 1 lbs.) \$ 34.06
#2081-960 960 ml (Ship wt. 3 lbs.) \$ 76.83



PRIVERMECTIN CATTLE POUR-ON

For the treatment and control of gastrointestinal roundworms (including inhibited Ostertagia ostertagi), lungworms, grubs, horn flies, sucking and biting lice and sarcoptic mange mites in cattle. (Safe for pregnant cattle).

Dosage: 1 ml per 22 lbs body weight. 48 day withdrawal.

#3002-1000 1 liter (Ship wt. 4 lbs.) \$ 32.21
#3002-5000 2.5 liters (Ship wt. 15 lbs.) \$ 71.24



IVOMEC SHEEP DRENCH

Ready to use, oral drench formulation for removal and control of: roundworms, lungworms, and nasal bots. (Safe for pregnant ewes.)

Dosage: 3.0 ml/26 lbs of body wt. **Special Order.**

#2032-960 960 ml (Ship wt. 3 lbs.) \$ Call
#2032-4800 4800 ml (Ship wt. 9 lbs.) \$ Call



CYDECTIN SHEEP DRENCH

Ready to use moxidectin solution used in the treatment and control of stomach worms, lung worms, round worms and nasal bots in sheep.

Dosage: 1.0 ml/11 lbs. (Safe for pregnant ewes)

#2091-1000 1000 ml (Ship wt. 3 lbs.) \$ 96.31
#2091-4000 4000 ml (Ship wt. 9 lbs.) \$ 311.22



VALBAZEN

Oral drench for the removal and control of: Stomach worms, Intestinal worms, Lung worms, Liver Fluke, and Tapeworm.

Dosage: 4 ml/100 lb of body wt. Withdrawal: 27 days cattle; 7 day sheep.

#2033-500 500 ml (Ship wt. 2 lbs.) \$ 54.07
#2033-1000 1000 ml (Ship wt. 4 lbs.) \$ 93.65



SAFEGUARD DEWORMER

(Fenbendazole) For removal and control of: Stomach worms, Intestinal worms, Lung worms, Tapeworm*.

Cattle Dosage: 2.5 ml per 109 lbs body wt. *Tapeworm dose: 5 ml per 109 lbs bw. 8 day withdrawal.

#2034 1000 ml (Ship wt. 3 lbs.) \$ 188.67



PROHIBIT TRAMISOL-LEVASOLE

Broad spectrum anthelmintic for sheep and cattle, controls stomach worms, intestinal worms, and lung worms. Sheep dosage: 52 gm pkg deworms 128 head of 100 lb animals. **72 hour withdrawal.**

#3018 (Ship wt. 1 lb.) \$ 22.35



NYLON ROPE HALTERS

Fully adjustable, and extremely durable. Assorted colors.

#3001 (Ship wt. .5 lb.) \$ 6.50



MARKING STICKS

Twist-up design makes these markers convenient and long lasting. Marks last about 3-4 weeks and are scorable by woolen mills. Colors: Red, Orange, Green, Blue, Purple and Black.

#2014 (Ship wt. 0.5 lb.) \$ 2.50



MINERAL FEEDER

Poly mineral feeder on a heavy duty base. Design protects mineral from the weather. Holds 50 lbs of sheep mineral. 3 sizes.

#3003 (Ship wt. 70 lbs.) \$ 495.00
buy two or more = \$ 450.00/each



HOT-DIPPED GALVANIZED SHEEP EQUIPMENT

We are offering a limited amount of sheep equipment. All products are top quality, heavy gauge steel equipment which is hot-dipped galvanized. For producers who want very long life; our hot-dipped galvanized equipment is the answer.



BIG BALE FEEDER 7' X 7' HDG

This big bale feeder for sheep consists of four seven foot panels. Two of the panels slide in as the animals eat. Waste is minimal with this feeder with its slant bar design and slide-in features. This feeder eliminates the large hay waste seen in big bale feeders where animals reach up and pull the hay down to eat- dropping it in the process. Heavy gauge construction- twice as heavy as the competition at about the same price as a painted feeder. **270 lbs.**

#3015 (Call about shipping) \$ Call



HANG ON FEEDERS

Check out these new 'Hang On Feeders', great for use in the barn or at shows. 24" and 36" in stock, other sizes available. Give us a call today! **Call about shipping.**

#3008-12 12" Feeder \$ 31.29
#3008-24 24" Feeder \$ 45.00
#3008-36 36" Feeder \$ 61.90
#3008-48 48" Feeder \$ Call



COMBINATION FEEDER

Poly feeder for self feeding grain. 48 inches. **Call about shipping.**

#3009-48 48" Feeder \$ 250.00

BIOLOGICALS / PHARMACEUTICALS



CD/T VACCINE

For the immunization against enterotoxemia and tetanus, caused by the toxins of *Clostridium perfringens* Type C & D, and *Clostridium tetani*.

Dosage: 2 cc IM, or Sub. Q repeat in 14–28 days and a booster once annually. 2ml dose.

#2036–10	10 dose/20 ml (0.5 lb.)	\$ 8.25
#2036–50	50 doses/100 ml (1 lb.)	\$ 31.23
#2036–250	125 doses/250 ml (2 lbs.)	\$ 60.00

Vaccine Prices

We are very competitively priced on vaccines. However we have noticed that some competitor's catalogs were published with 2024 prices. We are using the current 2025 vaccine prices. If you are price shopping on vaccines make sure you get current prices before you buy.

C & D (ONLY) VACCINE

We stock CD/T and recommend it over C&D only. C&D only is a special order.

#2037	50 doses/100 ml	\$ 24.08
-------	-----------------	----------

(Ship wt. 2 lbs.)

C & D ANTITOXIN

For immediate prevention and treatment of *Clostridium enterotoxemia* in sheep, cattle and goats. **Special Order**

Dosage: lambs: 5–10 ml., calves: 25 ml

#2038	250 ml (Ship wt. 1 lb.)	\$ 91.80
-------	-------------------------	----------

CASE-BAC

Caseous lymphadenitis bacterin toxoid

For vaccination of sheep as an aid in prevention of caseous lymphadenitis.

Dosage: 2 ml. SQ. Repeat in 4 weeks and an annual booster.

#2040–20	10 doses/20 ml (0.5 lb.)	\$ 9.43
#2040–100	50 doses/100 ml (1 lb.)	\$ 41.16



ABORTION VACCINES

VIBRIO-CAMPYLOBACTER FETUS BACTERIN - OVINE

Vaccinate healthy ewes 30 days before breeding to prevent vibriosis. You can give a mid-gestation booster if desired. Ewes that have never been vaccinated will need an additional vaccination the first year.

Dosage: 5 ml SQ over ribcage.

#2042–50	10 doses/50 ml (0.5 lb.)	\$ 10.08
#2042–250	50 doses/250 ml (1 lb.)	\$ 39.20



CHLAMYDIA PSITTACI

(Killed chlamydia) Used in the prevention and control of enzootic abortion in ewes. Vaccinate ewes 30 days before breeding. Ewes that have never been vaccinated will need a second vaccination the first year.

Dosage: 2 ml SQ over ribcage.

#2043–20	10 doses/20 ml (0.5 lb.)	\$ 15.75
#2043–100	50 doses/100 ml (1 lb.)	\$ 66.15

TETANUS ANTITOXIN

+ Confers immediate passive immunity, lasting about 7–14 days.

+ Use when docking and castrating. **Dosage** for sheep: For Prevention, 300–500 unit injection, or about 1/2 cc. Treatment, 3,000 to 15,000 units, SQ.

#2044–1	50ml 15,000 unit plastic vials (Ship wt. 1 lb.)	\$ 70.00
---------	---	----------

#2044–10	box of (10) 1500 unit vials (Ship wt. 1 lb.)	\$ 77.00
----------	--	----------



TETANUS TOXOID (CONCENTRATED)

Concentrated. Confers long-term immunity against tetanus (lockjaw).

Dosage: 1 cc per 100 lbs. of animal, 2 times in 30 day period. **Special Order**

#2045	10 cc vial (Ship wt. 0.5 lb.)	\$23.80
-------	-------------------------------	---------



OVINE ECTHYMA ~ Soremouth Vaccine

For vaccination of healthy sheep and goats against 'soremouth'.

#2046	100 doses (Ship wt. 1 lb.)	\$ 39.90
-------	----------------------------	----------

MANNHEIMIA PASTEURELLA VACCINE

Inject 2 ml SQ for the prevention of pneumonia caused by *pasteurella haemolytica* and *pasteurella multocida*. Give 2 vaccines; 2–4 weeks apart to establish initial immunity. Give a 2 ml annual booster thereafter. This vaccine can be given to lambs at the same time they get their CD/T vaccine. Give ewes this vaccine and CD/T as a pre-lambing vaccination program. Mannheimia Pasteurella Vaccine can be given to sheep, goats, and cattle 2ml dose.

#2049–20	10 doses/20 ml (0.50 lb.)	\$ 10.40
----------	---------------------------	----------

#2049–100	50 doses/100 ml (1 lb.)	\$ 33.51
-----------	-------------------------	----------



BOVINE PILI SHIELD (E. COLI VACCINE)

The best and most cost effective way to prevent E. Coli scours and death loss is to vaccinate the cow so she will pass protection to the calf through colostrum. A single 1 ml dose given to the cow in late gestation will help protect the newborn calf from scours and death due to e. coli K99. Many sheep producers are also using this vaccine. They are vaccinating the ewe flock four weeks prior to lambing with 1 ml sub Q.

#2104–20	20 doses/100 ml (0.50 lb.)	\$ 36.96
----------	----------------------------	----------

#2104–100	100 doses/100 ml (1 lb.)	\$ 150.73
-----------	--------------------------	-----------



ENFORCE

ENFORCE 3 is the first and only intranasal respiratory vaccine that prevents respiratory disease caused by BRSV, while also aiding in the prevention of IBR and PI3, to help get cattle off to a healthier, more productive start.

#3043–20	20 doses/100 ml (0.50 lb.)	\$ 20.00
----------	----------------------------	----------

#3043–50	50 doses/100 ml (0.50 lb.)	\$ 51.09
----------	----------------------------	----------

#3043–100	100 doses/100 ml (0.50 lb.)	\$ 71.82
-----------	-----------------------------	----------



PRICES SUBJECT TO CHANGE WITHOUT NOTICE.

SHEEP FLOCK HEALTH PROGRAMS

DEWORMING PROGRAMS

Timing, rotation of dewormers, and product selection contribute to the frequency and effectiveness of your deworming program. Internal parasites (worms) are spread to stock thru fecal contamination of pastures. The parasite eggs are picked up by grazing sheep.

The old idea of changing dewormers every time you deworm creates parasite resistance to dewormers. Under dosing also creates resistance.

In terms of dewormer rotation: Use a long rotation such as one year on cydectin and one year on ivermectin (ivomec). Only add the use of either albendazole (valbazen) or fenbendazole (safeguard) if you have tapeworms. The ewe flock should be able to get by with three dewormings annually. Lambs reared on pasture might need monthly dewormings; while confined lambs will need just one or two dewormings.

TIMING OF DEWORMING

Timing is everything in an effective worming program. Traditionally it is suggested that the ewe flock be dewormed twice a year; prior to spring turn out and again in the fall. Whenever possible deworm the ewes and then hold them in drylot overnight. Right after deworming, ewes will pass the parasite worm eggs thru their fecal material. Holding the ewes off pasture at this time prevents its infection with parasite eggs.

For a bit more control we recommend giving the ewe flock two dewormings early in the grazing season. If you deworm early you reduce parasite population increases on the pasture. In late spring deworm the ewe flock prior to turn out onto pasture and then again two to four weeks later. Traditionally producers wait until summer or fall for that second deworming. By then the pastures have an actively growing population of parasites. The two early deworming's keep the pasture parasite load at a lower level. This lets producers wait until fall for the third deworming of the ewe flock.

Another good time to deworm the ewe flock is in the fall at breeding or when you get ready to bring the ewes in for the winter. Deworming late in the fall aids flock parasite control two ways. (1) Internal parasites have a sort of hibernation stage at that time—ivermectin effectively controls this stage. (2) De-worming prior to lambing cleans up the ewe; thus reducing lamb infection.

DEWORMING FOR TAPEWORMS

The only internal parasite of sheep that you will see in the stool is segments of the tapeworm. I would only recommend deworming for tapeworms if you see or know you have a problem. If you do not have tapeworms— don't treat for them. Typically



tapeworm's are the worst in late spring and summer. The tapeworm does not suck blood like stomach worms. However they can wreak havoc with thriftiness and feed conversion; especially in lambs. Results vary flock to flock as to which dewormer works best to control tapeworms. There are only two product choices which will get tapeworms; fenbendazole and albendazole, both white drenches. Do not use albendazole (valbazen) on pregnant ewes. When using fenbendazole use the higher dose of 5ml/109 lb body weight to control tapeworms. My personal experience is that fenbendazole works better than albendazole (valbazen). Most years one treatment for tapeworms cleans them up. Sometimes a follow up deworming will be needed 2 to 4 weeks later.

DEWORMING FOR STOMACH AND INTESTINAL WORMS

The clear drenches ivermectin and cydectin are by far the most effective in controlling stomach and intestinal worms. Stomach worms such as haemonchus contortus are blood suckers and cause anemia in sheep.

FECAL SAMPLES

I recommend annual fecal samples to check your progress in control. Take samplings to your local vet for 'egg counts'. A good time to do this is about two weeks post deworming in the summer.

CONTROL OF NASAL BOTS IN SHEEP

Nose bots are controlled with the use of ivermectin.

LUNGWORMS IN SHEEP

Cydectin and ivermectin (ivomec/privermectin) control lungworms.

FORM OF PARASITE CONTROL

There are several forms of anthelmintic's (dewormers) such as injection, drench, bolus, paste, and feedgrade. I recommend oral drenches over all other methods. Drenching can be very fast at 60 head or more per hour with a handling system. Drenches also tend to be the most cost effective and offer excellent control. Bolus and paste versions of dewormers are more expensive; but offer advantages to smaller producers who desire

to buy smaller quantities than are generally available when buying drenches. Injection is more labor intensive than drenches. Injection with the resulting skin puncture also offers an opportunity for infection from caseous or OPP. So if you have risk with these afflictions do not use injectable dewormers. Feed grade dewormers have a limited selection of products. They are also expensive and not very effective. The lack of effectiveness from their use is due to variances in feed consumption among individuals.



VACCINATION PROGRAMS

A cost effective, comprehensive 'year around' flock health program need not be complicated or expensive. Vaccinate for the common and basic problems that nearly all flocks have such as tetanus, abortion diseases, and enterotoxemia (overeating disease). Each flock should vaccinate for the basic's plus any additional problems which are specific to their situation. For example; a flock which has a big problem with caseous would vaccinate for tetanus, enterotoxemia, and caseous. Whereas another flock might be giving tetanus, enterotoxemia, and footrot vaccines.

VACCINATING THE EWE FLOCK

For most ewe flocks you would give annual booster's of abortion vaccine(both Chlamydia & Campylobacter) and also CD/T (tetanus toxoid + Cl. Perfringens CD).

The ewe flock would receive their abortion vaccine annual booster just prior to breeding. The Midwest, East, and Upper Midwest have the moisture and temperature range in which the abortion disease organisms can propagate well. So in these areas I feel it is a must for every flock to vaccinate for abortion disease. Use both vaccines; Campylobacter(vibrio) and Chlamydia (enzootic) on your ewe flock. Both vaccines are killed, so you will not be bringing in the disease thru vaccination.

The ewe flock's annual CD/T booster is given 3-4 weeks pre lambing. By making this a pre-lambing vaccination you get dual benefits. The ewes get their annual booster; and the lambs are born with immunity. The pre-lambing CD/T gives the lambs several weeks of immunity. So you can delay giving the lambs their first CD/T until 6 weeks of age or so. If

Visit our website hunternutrition.com for more informational articles

SHEEP FLOCK HEALTH PROGRAMS

the ewes do not have the pre-lambing booster on time, lambs will be at risk shortly after birth. Also the ewes colostrum will contain antibodies from the pre-lambing vaccines which will protect the new born lambs. So really the ewe flock will get three injections; two abortion vaccines and the prelambing CD/T.

VACCINATING LAMBS

Lambs will need a tetanus antitoxin vaccination at tail docking/castrating in order to receive immediate immunity. Lambs would then need two vaccinations of CD/T two weeks apart. A good time to vaccinate lambs with CD/T is at about 6 and 8 weeks of age. Lambs will get three vaccinations a year, in most cases: the TAT(tetanus antitoxin) at tail docking/castrating and the two CD/T vaccines.

VACCINES TOXOID VS. ANTITOXIN

A toxoid is the common form of a vaccine which is given for long term immunity to disease. The toxoid form of a vaccine takes about two weeks to be effective, needs an annual booster, and gives long lasting immunity. By contrast an Antitoxin gives immediate immunity; but that immunity is short lived. TAT- tetanus antitoxin is a good example of this. TAT is given right at injury, tail docking or castrating so lambs are immediately protected against getting tetanus. In summary : Anti-toxins are used to treat a disease; and Toxoid's are used to prevent a disease.

HOW VACCINES WORK

When a vaccine is given to an animal its system creates antibodies. The antibodies are specific to the particular disease's which the animal was vaccinated for. Toxoid vaccines take 7 to 14 days for antibody development to occur and thus give the animal immunity. Anti-toxin's give immediate protection as a result of their direct neutralization of the toxin created by the infecting organism.

WHY GIVE TWO VACCINATIONS?

The first vaccination of a naive animal (animals never vaccinated before) sensitizes its system to receive the immunity from the second dose. The second vaccination; usually given two weeks later creates the real immunity needed. Some producers try to get by with just one vaccination of lambs. This simply will not provide much if any immunity due to the nature of an animals immune response.

CD/T VS. TAT; WHEN TO USE EACH

We often get questions about when to use tetanus antitoxin and when to use CD/T on lambs. Some ask if both can be used at the same time on baby lambs at processing time. Do not use TAT and CD/T at the same time ! Anaphylactic shock will occur. The best program for control of tetanus and Cl. Perfringens (overating disease) is as follows. (1)Vaccinate the ewes with CD/T pre-lambing. (2) Give TAT to lambs at docking/castrating, and (3) Give lambs two CD/T vaccinations at 6 and 8 weeks of age.



SOREMOUTH (OVINE ECTHYMA) VACCINATION

Ovine Ecthyma (soremouth) vaccine is a live vaccine which you re-hydrate to use. Live vaccines can introduce the disease to your flock so do not use this or any other live vaccines unless you already have the disease on your farm. Also use caution if vaccinating lambs with ovine ecthyma; since humans can contract this disease.

VACCINATION SITES

Some sites are better for vaccination than others. Concern's are abscess formation, ease of injection, animal reaction, and vaccine absorption. For baby lambs who are getting TAT tetanus antitoxin at tail docking/castrating: a simple IM (intramuscular) injection into the leg muscle will do. Many sheep vaccines are best given Sub Q. Best sites for this are in the loose skin of the armpit area or over the ribcage. We discourage neck vaccinations; especially IM injections. Animals tend to have more problems with vaccinations done in the neck area than in other areas.

SHEEP LIFE CYCLE FEEDING PROGRAM

CRITICAL STAGES

The last four weeks of gestation and the first six weeks of lactation are the most critical stages of production in the ewe's life.

Late Gestation – What you do to the ewe flock in late gestation determines the success of your lambing. This is the time that ewes need to be vaccinated and cleaned up of coccidiosis and bacteria that can cause pneumonia in baby lambs. Even-though the adult ewe rarely shows signs of a cocci infection- she is the source of infection for the new born lambs. (all sheep have some cocci in their gut) It is essential that a specialized feeding program be used pre-lambing to clean up the cocci in the ewe flock. This will greatly reduce the degree of infection of the newborn lambs – giving them a chance to consume enough creep feed with a coccidiostat to medicate themselves.

Typical Ewe Supplements are too low in bovatec (300g/ton) thus a daily intake level of only 18 mg is realized. The manufacturer of bovatec says a ewe needs 24 to 70 mg daily. Our 45% Ewe Supplement has 408 grams /ton of bovatec. Therefore a 0.33 lb. feeding rate provides 70 mg per ewe daily!

PRE-LAMBING VACCINATIONS

To protect your lambs from Clostridia C & D + Tetanus and Pneumonia; vaccinate ewes 3-4 weeks pre-lambing with 2 cc (ml) of CD & T Toxoid and 2 cc of Mannheimia Pasturella Vaccine. These two vaccines can be given at the same time in separate injection sites. First time lambers would need two vaccinations two weeks apart for maximum immunity. I think this is a minimum pre-lambing vaccination program. You could also add the TSV-2 intranasal vaccine given at another time (to the ewe flock). You might also consider Sulfa treating the water 3 days on, 3 days off, 3 days on - for two weeks preceding lambing for respiratory disease control.

LATE GESTATION- FEEDING TO CONTROL ABORTIONS &

STILLBORNS

Feeding a 250 mg level (daily/ewe) of chlortetracycline (aureomycin) will reduce losses due to abortion diseases such as vibrio and chlamydia. If you are having trouble with toxoplasmosis, it is not affected by antibiotics such as aureomycin. You must feed rumensin (not approved) to control toxoplasmosis.

LATE GESTATION - FEEDING TO PREVENT WEAK LAMBS & WMD

Your gestation feeding program should also provide very high vitamin E and selenium levels. This will eliminate/ reduce weak & slow lambs, retained placentas, and WMD (white muscle disease), which is caused by low Vitamin E and Selenium. Most supplements provide only 0-30 IU Vitamin E and 0-30 mg Selenium /ewe/day. Our 45% EWE has 70 mg selenium and 50 IU of Vitamin E per 0.33 lbs.

Late Gestation Rations:

Daily Feeding Rate	1.25#	1.50#
Grain	1525	1600
45% Ewe	375	325
Aureo 4 G	100	75
	2000	2000

Above rations=0.25# of 45% fed/ewe/day.
Cost per ewe daily: 45% = 0.07¢

LACTATION FEEDING

Primary concerns in lactation are protein and energy intake in order to produce an adequate volume of milk. Phosphorous is also important in milk production and lamb development- it

SHEEP LIFE CYCLE FEEDING PROGRAM

is often low in traditional sheep feeds. Vitamin E intake should be 40 to 50 IU per ewe daily; but most feeds provide only 5–20 IU. (Hunter Nutrition's 45% Ewe provides 50 IU Vit E and 70 mg Selenium per 0.33 lbs. of supplement.)

Lactation Rations:

Daily Feeding Rate	2.0 #	2.5 #	3.0#
Grain	1700	1750	1800
45% Ewe	300	250	200
	2000	2000	2000

Rations above will provide a daily intake rate of 0.30 lbs. of 45% Ewe Supplement. These rations are fed with 'good' quality hay. Forage testing and ration formulation service is available for ration balancing based on your farms hay quality and size of ewe. Cost per ewe daily when feeding 0.30# of 45% in lactation is only \$0.10.

STARTING LAMBS ON FEED

Energy and protein intake are the most limiting factors in the growth of baby lambs. Vitamin E and coccidiosis control are most critical— for good health.

Most companies market lamb starter feeds based on low cost. These diets produce low rate of gains and fail to let a lamb maximize his genetic potential. A good Lamb Starter is high in energy, low in fiber and contains very high levels of vitamins, minerals, & the proper level of coccidiostat.

Proper particle size of the Starter Feed is very important to ensure adequate, early consumption.

Lambs typically prefer smaller, firmer particle size feeds from birth to about 2 weeks of age. Feeds such as crumbles and ground feeds will be accepted first provided these very young lambs have access to them.

From 2 to 4 weeks of age a lamb's preference changes to a pellet. At 4 weeks of age they prefer a grain mixture (texturized feed). Lambs have a definite pattern of preference of starter feeds. However these preferences change very quickly.

When starting baby lambs on feed make sure that the creep is set up as early as possible. Early exposure to feed will improve future feed consumption levels, facilitate rumen development and overall performance of the lamb. I also recommend using a self-feeder in the creep area and make sure it never runs empty. In addition to a top starter feed, provide good quality legume or legume mixed hay in the creep area. Lambs often will eat hay first.

FEEDING FROM WEANING TO MARKET

Be sure you allow for a smooth transition from the creep ration to grower/finisher feeds. Keep lambs on the creep ration for about a week post-weaning. Also be sure when you wean to remove the ewes from the lambs.

Leaving the lambs in a familiar environment makes for a less stressful weaning, resulting in

improved performance.

The second week post weaning you can blend the grower ration with the creep ration. A good way to do this is to put the new feed on top of the (old) creep ration in a self feeder. The rations mix as they are consumed.

Good nutrition and economy are best achieved for growing and finishing lambs with the use of a mix of 80% grain and 20% supplement pellet. When you first switch to this program you should use cracked grains. Only after lambs are about 120 days old can you successfully self feed a whole grain and pellet ration. Lambs from weaning to 120 days of age tend to sort the whole grain and pellet diets. This is why we recommend using cracked grain initially when switching to the grain and pellet program.

Rations for Lambs:

Age	60 to 120 days	120 days to market
Grain	1580	1580
40% Lamb Supp	400	400
Soybean Oil	20	20
	2000	2000

FEEDING REPLACEMENT EWES

Proper nutrition of the replacement ewe is one of the most overlooked areas in sheep nutrition. You cannot simply take replacements out of the feedlot and send them to pasture with the ewe flock. Replacements should be managed as a separate group for at least the first year or until their first lambing.

Your replacements can be fed like the rest of your lamb crop to about 90 lbs. This weight will vary with breed type and genetics; but should be a point where the lamb would carry only enough finish to rate low choice. Excessive body fat will reduce future productivity (conception rate, prolificacy) and milk production. This "90 lb." replacement would then require 15% more nutrients. These requirements could not be met if your replacements are managed with the ewe flock. As the replacement ewe grows we see her requirements for dry matter remain fairly constant to 150 lbs. However the protein and energy requirements go down. The feeding of replacements is an art, you need to keep them growing and gaining weight but not putting on excessive fat.

The properly developed ewe lamb should attain at least 75% of her mature weight by the time she is 12 months old. She could join the ewe flock after this first lactation.

A successful replacement ewe lamb feeding program is to give these ewe lambs a separate high quality pasture and hand feed the grain mixture. Keep them on the good pasture for its fiber and protein content. Then vary the pounds of grain mix fed per day according to the condition and growth rate of the ewe lambs. Typically you will start at about 3–4 lbs. of feed (at 90 days) when you first separate the replacements from the other lambs. At about 4–6 months you will probably

be feeding 2 to 2.5 lbs. Then from about 9 months of age to lambing they typically receive 1–2.5 lbs. of grain plus that good pasture or hay.

Hand fed grain mix for Replacement Ewes:

Grain	1600
40% Lamb Supplement	400
	2000



Feeding BOVATEC – and still having problems with COCCIDIOSIS?

HUNTER NUTRITION HAS THE SOLUTION FOR COCCI IN LAMBS!!

SPECIAL TWO-STAGE PROGRAM THAT GREATLY REDUCES COCCI:

1. Feed extra BOVATEC pre-lambing, through our ewe supplement, to clean up the ewe and the environment that lambs are exposed to. Our Ewe supplement is unique, each 1/3# provides 70 mg of bovathec, (Plus 0.70 mg Selenium, and 50 IU Vitamin E). This is the highest fortified ewe supplement available— no other supplement provides levels this high. The 4 week feeding of 45% Ewe Supplement will clean up the ewe, which will reduce the level of cocci in the environment, and thus greatly lessen the degree of exposure that the lambs have to coccidiosis. (Costs \$0.07/hd/day).

2. Feed lambs one of our starter feeds which contain 90 grams/ton of BOVATEC. Nearly all other starters have only 30 grams/ton of BOVATEC. This level of BOVATEC doesn't provide adequate cocci control for lambs under 60 days of age. (30 grams/ton is adequate for lambs consuming 3# of feed/day. But baby lambs consume much less than this, and will need a more concentrated level.)

SAMPLE FLOCK HEALTH & FEEDING PROGRAM

EW E FLOCK PROGRAM

Health Program: Deworming 3–4 times per year. Typically first deworming at pasture turn-out. Then again 3 weeks later, (as needed mid-summer deworming for tapeworms), then last deworming prior to coming into the barns for the winter.

Vaccinations: Pre-breeding with abortion vaccines if needed.

Pre-lambing (3–4 weeks) CD/T vaccine & Pasturella pneumonia vaccine.

Ewe Feeding Program

Feed Needed Per Ewe /Year

1. Year-round access to free choice 'Sheep Mineral' (3/4 to 1 ounce daily)	22.00 lbs.
2. Maintenance= pasture and hay only for open and early gestation period.	
3. Late Gestation= last 4 weeks; feeding good quality first cutting hay.	
0.3 lbs. 45% Ewe Supplement /day X 28 days = lbs. 45% Ewe Supplement	9.00 lbs.
1.00 lbs. Corn (grains) /ewe/ day X 28 days = lbs. corn per ewe in gestation.	28.00 lbs.
4.00 lbs. Hay/day X 28 days = lbs. hay needed in gestation.	112.00 lbs.
4. Lactation= 8 weeks; feeding good quality legume or legume mixed hay.	
0.3 lbs. 45% Ewe Supplement /day X 60 days =lbs. supplement in lactation.	18.00 lbs.
2.00 lbs. Corn (grains) ewe/day X 60 days = lbs. corn needed in lactation.	120.00 lbs.
4.50 lbs. Hay (range 3.5 to 5.0 lbs.) X 60 days = lbs. hay needed in lactation.	270.00 lbs.

**Total Annual Ewe Requirements
For Hunter Nutrition Products:**

**Sheep Mineral (free choice) =
45% Ewe supplement =**

**22 lbs.
27 lbs.**

LAMB PROGRAM

Health Program: At birth = Survive! and their mother's colostrum.

At docking/castrating - TAT vaccine (tetanus antitoxin) + Pasturella.

At 4–6 weeks of age - 1st CD/T vaccine (overeating/tetanus) + Pasturella.

At 8–10 weeks of age - 2nd CD/T vaccine + Pasturella and deworm.

Lambs might need 1-2 more dewormings.

Lamb Feeding Program

Feed Needed Per Lamb /Year

1. Birth to Weaning (60 days) Use Texturized Lamb Starter and/or Super 20 Lamb Pellet	
Lamb Starter Feed used per Lamb to 60 days of age is 1 bag or	50.00 lbs.
2. Grower / Finisher Lamb Rations : 60 days to Market-Full fed farm blended ration.	
Corn (grain) 1600 Feed needed from weaning to 125 # market wt.	
40% Lamb Suppl. 400 Corn used per lamb (post weaning) in ration =	200.00 lbs.
2000 40% Lamb Supplement used per lamb =	50.00 lbs.

**Total Annual Lamb Requirements
For Hunter Nutrition Products:**

**Lamb Starter Feed =
40% Lamb Supplement =**

**50 lbs.
50 lbs.**

OUR FEEDS AVAILABLE VIA DIRECT TRUCK SHIPMENT TO YOUR FARM

YES, you can get on our nutritional program even if you're a distance from us.

We have some great freight rates for our customers who are too far away and cannot pickup feed or be serviced by our delivery trucks. Our trucks service most of Indiana, and large parts of Ohio, Illinois, Michigan, and Iowa. For those out of our service area (whose order cannot go UPS), we have secured discounted freight rates by Trucking Companies for Common Carrier Shipment. The rates for Common Carrier (LTL) shipments are quite a bit less than shipping bags of feed by UPS. We have had several occasions where a customer wanted to order just Topline & Show Pro, thinking they couldn't afford UPS shipping on Show Feed. We were able to ship them 45-50 bags of product for less money than the UPS bill would have been on just the few bags of Show Feed Additives.

FEED SHIPMENT BY COMMON CARRIER

PALLET RATE FREIGHT on 45-50 bag pallets shipped via common carriers

	1 pallet	2 to 4 pallets	5 + pallets
Indiana (via R&L)	\$165.00	\$145.00	\$145.00
Indiana (Estes)	\$165.00	\$145.00	\$145.00
Illinois (via R&L)	\$165.00	\$145.00	\$145.00
Illinois (via N&M) - Zip Codes 600-612.....	\$132.00	\$104.35	\$ 98.42
Illinois (via N&M) - Zip Codes 613-627.....	\$132.00	\$124.50	\$116.23
Illinois (Estes).....	\$165.00	\$145.00	\$145.00
Ohio (via R&L).....	\$175.00	\$155.00	\$155.00
Ohio (Estes).....	\$175.00	\$155.00	\$155.00
Kentucky (via R&L)	\$195.00	\$170.00	\$170.00
Kentucky (Estes).....	\$195.00	\$170.00	\$170.00
Tennessee (via R&L)	\$161.00	\$144.00	\$144.00
Tennessee (Estes).....	\$161.00	\$144.00	\$144.00
Michigan - Upper (via N&M).....	\$142.20	\$127.10	\$116.23
Michigan (via R&L)	Call	Call	Call
Michigan (Estes).....	\$184.00	\$161.00	\$161.00
Minnesota (via N&M)	\$142.20	\$127.10	\$116.23
Missouri (via R&L)	\$242.00	\$224.00	\$224.00
Missouri (Estes)	\$242.00	\$224.00	\$224.00
Iowa (via R&L)	\$236.00	\$201.00	\$201.00
Iowa (Estes)	\$236.00	\$201.00	\$201.00
Iowa (via N&M) - Eastern Iowa only	\$132.00	\$124.50	\$116.23
Texas (via R&L)	\$305.00	\$282.00	\$282.00
Texas (Estes)	\$305.00	\$282.00	\$282.00
North Carolina (Estes)	\$265.00	\$247.00	\$247.00
North Carolina (via R&L)	\$265.00	\$247.00	\$247.00
Virginia (R&L)	\$265.00	\$247.00	\$247.00
Virginia (Estes)	\$265.00	\$247.00	\$247.00
Pennsylvania (Estes)	\$265.00	\$247.00	\$247.00
South Carolina (R&L)	\$265.00	\$247.00	\$247.00
South Carolina (Estes)	\$265.00	\$247.00	\$247.00
Wisconsin (via N&M).....	\$132.00	\$124.50	\$116.23



We can ship Common Carrier to most states. Call for availability.

Note: Freight rates subject to change without notice and do not include any fuel surcharges.

EXAMPLE # 1 : With our Common Carrier Freight Companies we have service to several Midwestern States and we have contracts for flat rates on pallets. Example: This rate is for up to 2500 lbs; = 50 bags of feed on one pallet. This is a flat rate per pallet, you do not have to take 50 bags. However the rate is the same from 1 to 45-50 bags- so take advantage of the 'pallet rate. These rates are about \$2.20 to \$4.25 per bag. Compare this cost of single bags going UPS at \$45.00 to \$55.00 per bag.

EXAMPLE # 2 : Shipment in areas serviced by our trucks (IN, IL, IA, MI, WI & OH) is priced per ton, with a minimum. Call for rates.

EXAMPLE # 3 : UPS Ground Shipping works well for feed orders of 3 bags or less. Somewhere around the 3 bag feed order it is less expensive to ship Common Carrier, because of their flat dollar rate per pallet.

ORDERING INSTRUCTIONS AND CONDITIONS OF SALE

All items FOB Brookston, Indiana. The points below cover both feed orders and animal health/supply shipments. Feed orders that are not picked up are shipped either on our trucks or by common carrier (see page 37). For Animal Health, Vaccines, and Supply orders we ship by UPS. In areas where UPS is unavailable; items can be shipped parcel post via the US Postal Service. Customers pay all freight and shipping costs.

- Phone orders for animal health and supplies are generally done with a credit card; MC/ VISA (If ordering using a credit card, please have account number and expiration date ready). We can also calculate the cost of your order and you can send a check for it. Your order is shipped upon receipt of your check. If ordering by mail, please include card number, expiration date, and your phone number. \$15.00 minimum on all orders, \$2.00 handling fee on orders under \$15.00. You will need to call us to get the UPS shipping charges. Sorry, no UPS- COD's due to their high cost for our customers and problems with COD's.
- Indiana residents must pay 7% sales tax on non-agricultural products, which are not tax exempt. Tax exempt form must be on file to make agriculture tax exempt purchases. No sales tax on agriculture use items.
- Items, such as vaccines and drugs, ear tags, or those items which have been special made are non-returnable.
- **All items within this catalog are subject to price changes without notice.** Back ordered items not previously billed, will be billed at new cost. Because of changing ingredient prices, call for prices on feeds, minerals and premixes.
- **We are not responsible for damaged items not reported to carrier. Please make all damage claims with the carrier at the time of receipt of your shipment. If you do not note the damage on the bill of lading at the time of receipt and signing- the freight company will not reimburse you. Any damage with UPS shipments needs to be reported to the driver at delivery. UPS damages must be made directly to UPS for reimbursement by UPS.**
- **Texturized feed warranty:** Texturized feed has a three week (21 day) warranty from the date of manufacture. Mold inhibitors and other quality control measures are taken, which should allow texturized feeds to stay fresh for 30 days or more. However, this three week time limit is imposed since weather conditions and the buyers storage conditions can damage the product directly. 100% replacement will only be made on RETURNED FEED which is reported to us within 21 days of manufacture date.
- **RETURNS: RETURNS MUST BE MADE WITHIN 30 DAYS OF PURCHASE. Returned items must be in new salable condition with all packaging intact. Return approval is at the company's discretion. Returns are subject to a 10% restocking fee. Returns are not available on some feeds and other items. Prior approval must be obtained before any product is returned for any reason. This should be handled by calling us and reporting any lot numbers with your feed return request. Amount of credit issued is based on age and condition of product returned.**
- Returned checks are charged a \$20.00 fee.
- **Office and Plant Location:** Our office and production facilities are located at 200 N. South Street, Brookston, Indiana. Brookston is just north of the Lafayette area, and the junction of Interstate 65 and State Route 43. Coming from the North, West or South beginning at the intersection of SR 43 and SR 18 in Brookston; go East on SR 18 across the railroad tracks and turn north on South Street. Coming from the East; Take SR 18 to Brookston; turn north on South Street.
- **Order Lead Time:** Orders for custom or special order items and bulk feed (not floor stocked) should be placed to allow at least five working days for manufacture. Orders for standard (floor stocked) product for common carrier shipment should be placed three days in advance. Pick up of standard items can be made the same day; but we suggest pick up orders be placed two days in advance to facilitate fast, efficient handling and loading of the order. Orders going on our truck need a five working day lead time.

Ordering Instructions for UPS Orders

UPS has went to an 'On-Line' Shipping program making the UPS Zone Chart and Ground Service Charts previously used obsolete. The UPS internet-linked computer program quickly calculates the UPS dollar amount and any hundredweight discounts.

To place an order to be shipped UPS; add up the weight of each item to get the total weight of your order. Then call us toll free at 800-887-5260 with your order, and we will calculate the UPS shipping costs using the UPS WorldShip® Program. UPS permits us to ship packages up to 70 lbs. and figures any part of a pound as the next pound.



HUNTER NUTRITION, INC.

200 N South Street
P.O. Box 412
Brookston, IN 47923

PRSR STD
U.S. Postage
PAID
Lafayette, IN
Permit #74

NEW AND FEATURED PRODUCTS



HANG ON FEEDERS

CHECK OUT THESE NEW 'HANG ON FEEDERS'!
Great for use in the barn or at shows. 24" and 36" in stock, other sizes available.



MINERAL FEEDERS

Poly mineral feeder on a heavy duty base.

CONCEPTIO PRODUCTS

CONCEPTIO COMPLETE EWE PELLET

Conceptio Complete Ewe Pellet is fed as the sole grain before and during breeding. #501511

CONCEPTIO EWE SUPPLEMENT PELLET

Conceptio Ewe Supplement Pellet is a 36% protein pellet fed at about 0.25 lbs per ewe/day and used to farm blend feeds. #501518

SEE PAGE 9

LAMB MILK REPLACER

SUPER LAMB MILK REPLACER

This is the same highly fortified formula that Merricks was making until it sold it's line of milk and fat products to Milk Specialties. With the new manufacturing equipment this milk mixes very well! Super Lamb Milk Replacer is better fortified than any other formulation; and it mixes quick and easy with no clumps.

1-9 bags	\$ 48.00
10+ bags	\$ 47.00
80+ bags	\$ 46.00



UDDERLY EZ™ MILKER

NEW! The UEZ Sheep Milker is invaluable to collect colostrum, milk, or treat mastitis in commercial as well as small breeding operations. #3060

SEE PAGE 30

FREE SHIPPING



CHOOSE HUNTER LAMB STARTERS FOR BLOOM & PERFORMANCE



GIVE YOUR LAMBS A FAST START WITH HUNTER NUTRITION FEEDS!

SUPER 20 LAMB STARTER 90 B

TEXTURIZED LAMB STARTER 90 B